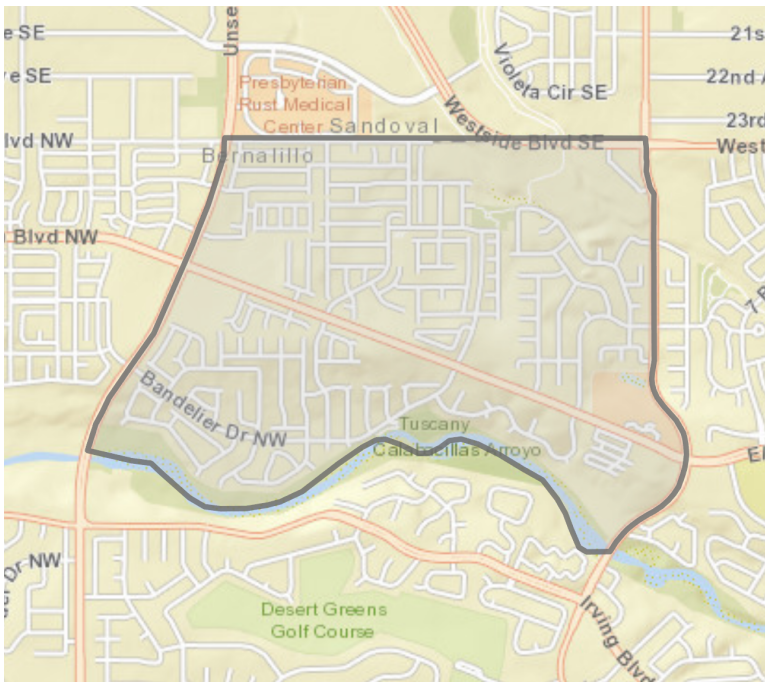
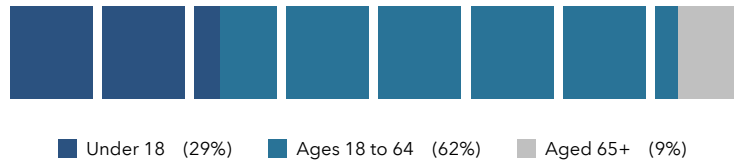


DEMOGRAPHICS AND KEY INDICATORS

Census Tract 47.45



POPULATION BY AGE



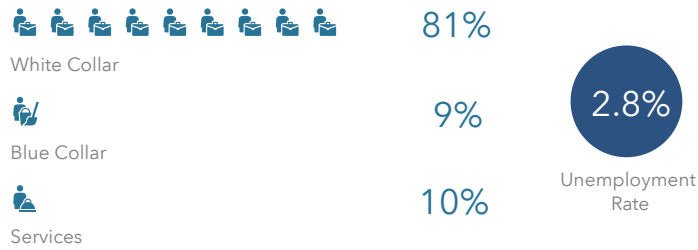
2019 Household Income (Esri)	Value
less than \$15,000	2.1%
\$15,000-\$24,999	4.0%
\$25,000-\$34,999	6.8%
\$35,000-\$49,999	11.8%
\$50,000-\$74,999	18.4%
\$75,000-\$99,999	21.4%
\$100,000-\$149,999	23.0%
\$150,000-\$199,999	5.0%
\$200,000 or greater	7.7%



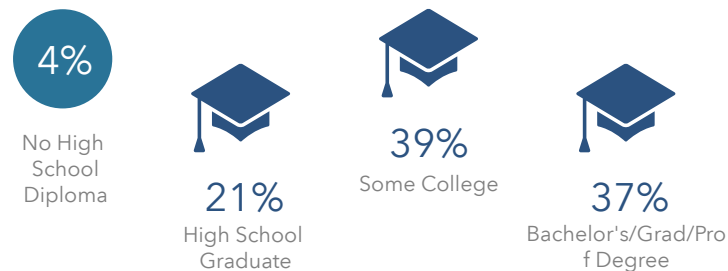
U.S. Census Bureau, Esri forecasts for 2019 and 2024, Esri Vintage 2019 Time Series

7,050 2019 Total Population	2,326 2019 Total Households	\$81,274 2019 Median Household Income	\$162,651 2019 Median Net Worth	113 Total Businesses
33.0 2019 Median Age	2.99 2019 Average Household Size	\$32,641 2019 Per Capita Income	\$63,710 2019 Median Disposable Income	1,240 Total Employees

EMPLOYMENT



EDUCATION



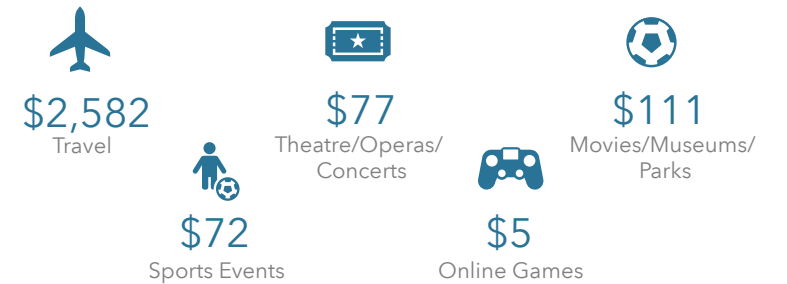
INTERNET ACCESS



ANNUAL HOUSEHOLD SPENDING



ANNUAL LIFESTYLE SPENDING



HOUSING STATS

