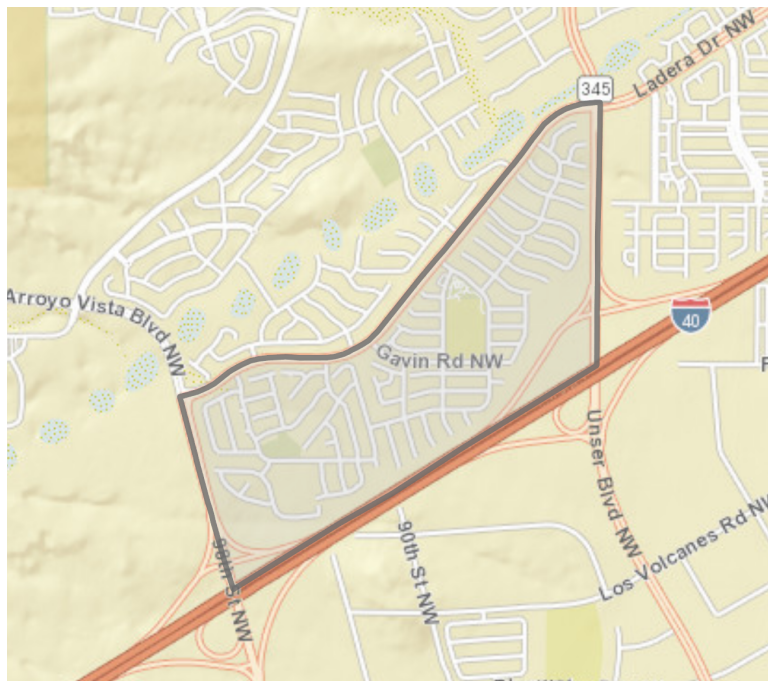
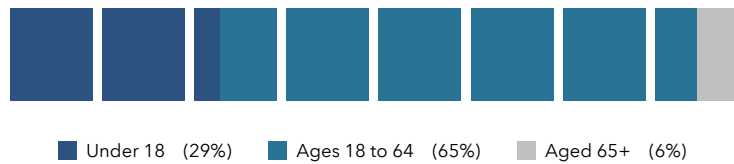


# DEMOGRAPHICS AND KEY INDICATORS

Census Tract 47.43



POPULATION BY AGE



2019 Household Income (Esri)	Value
less than \$15,000	3.1%
\$15,000-\$24,999	3.0%
\$25,000-\$34,999	4.3%
\$35,000-\$49,999	11.3%
\$50,000-\$74,999	25.5%
\$75,000-\$99,999	20.4%
\$100,000-\$149,999	25.7%
\$150,000-\$199,999	5.2%
\$200,000 or greater	1.5%



U.S. Census Bureau, Esri forecasts for 2019 and 2024, Esri Vintage 2019 Time Series

**3,447**

2019 Total Population

**1,198**

2019 Total Households

**\$77,410**

2019 Median Household Income

**\$154,666**

2019 Median Net Worth

**17**

Total Businesses

**31.5**

2019 Median Age

**2.88**

2019 Average Household Size

**\$29,516**

2019 Per Capita Income

**\$60,550**

2019 Median Disposable Income

**116**

Total Employees

## EMPLOYMENT



76%

White Collar



13%

Blue Collar



11%

Services



Unemployment Rate

## EDUCATION



No High School Diploma



19%  
High School Graduate



35%  
Some College



39%  
Bachelor's/Grad/Prof Degree

## INTERNET ACCESS



78%

Use Computer



90%

Use Cell Phone

## ANNUAL HOUSEHOLD SPENDING



\$2,169  
Apparel & Services



\$170  
Computers & Hardware



\$3,746  
Eating Out



\$5,043  
Groceries



\$5,697  
Health Care

## ANNUAL LIFESTYLE SPENDING



\$2,202  
Travel



\$64  
Theatre/Operas/Concerts



\$99  
Movies/Museums/Parks



\$60  
Sports Events



\$4  
Online Games

## HOUSING STATS



\$182,447  
Median Home Value



\$10,311  
Average Spent on Mortgage & Basics



\$1,103  
Median Contract Rent