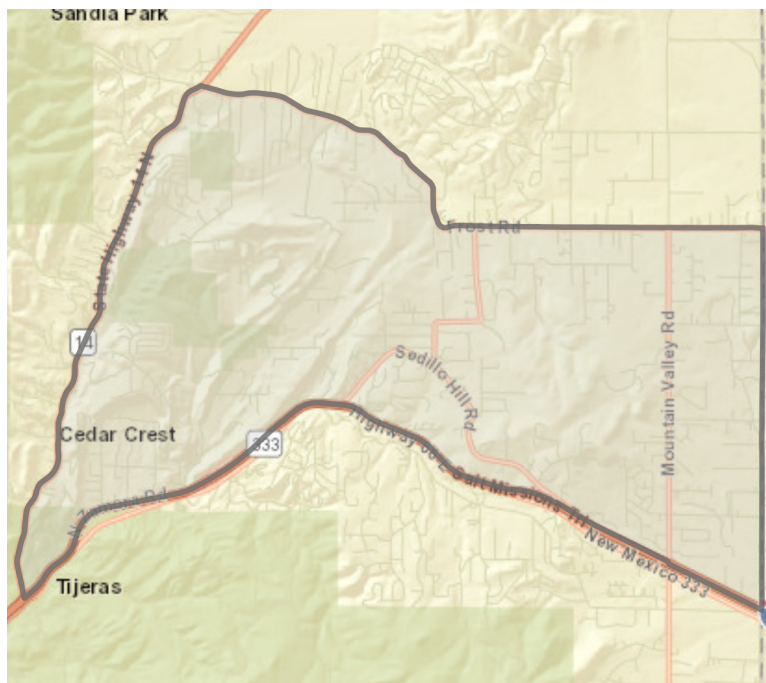
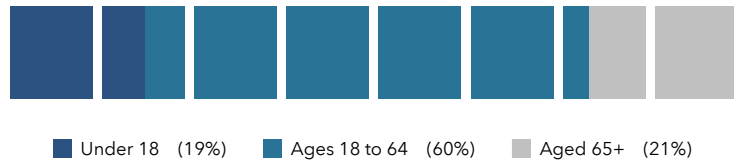


DEMOGRAPHICS AND KEY INDICATORS

Census Tract 38.04



POPULATION BY AGE



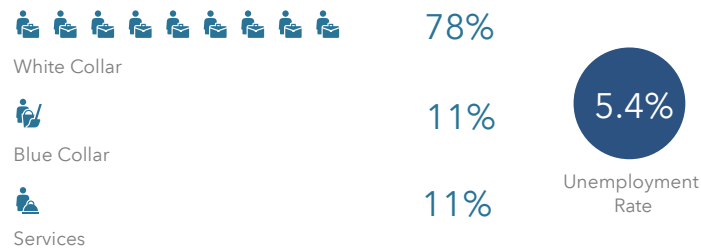
2019 Household Income (Esri)	Value
less than \$15,000	2.8%
\$15,000-\$24,999	3.4%
\$25,000-\$34,999	6.2%
\$35,000-\$49,999	7.9%
\$50,000-\$74,999	21.4%
\$75,000-\$99,999	15.3%
\$100,000-\$149,999	25.9%
\$150,000-\$199,999	11.5%
\$200,000 or greater	5.5%



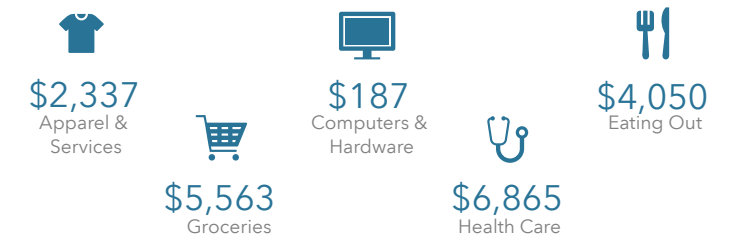
U.S. Census Bureau, Esri forecasts for 2019 and 2024, Esri Vintage 2019 Time Series

5,698 2019 Total Population	2,301 2019 Total Households	\$86,641 2019 Median Household Income	\$399,916 2019 Median Net Worth	115 Total Businesses
50.9 2019 Median Age	2.47 2019 Average Household Size	\$41,223 2019 Per Capita Income	\$70,234 2019 Median Disposable Income	512 Total Employees

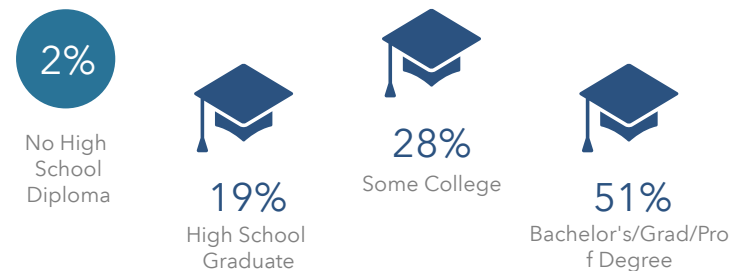
EMPLOYMENT



ANNUAL HOUSEHOLD SPENDING



EDUCATION



ANNUAL LIFESTYLE SPENDING



INTERNET ACCESS



HOUSING STATS

