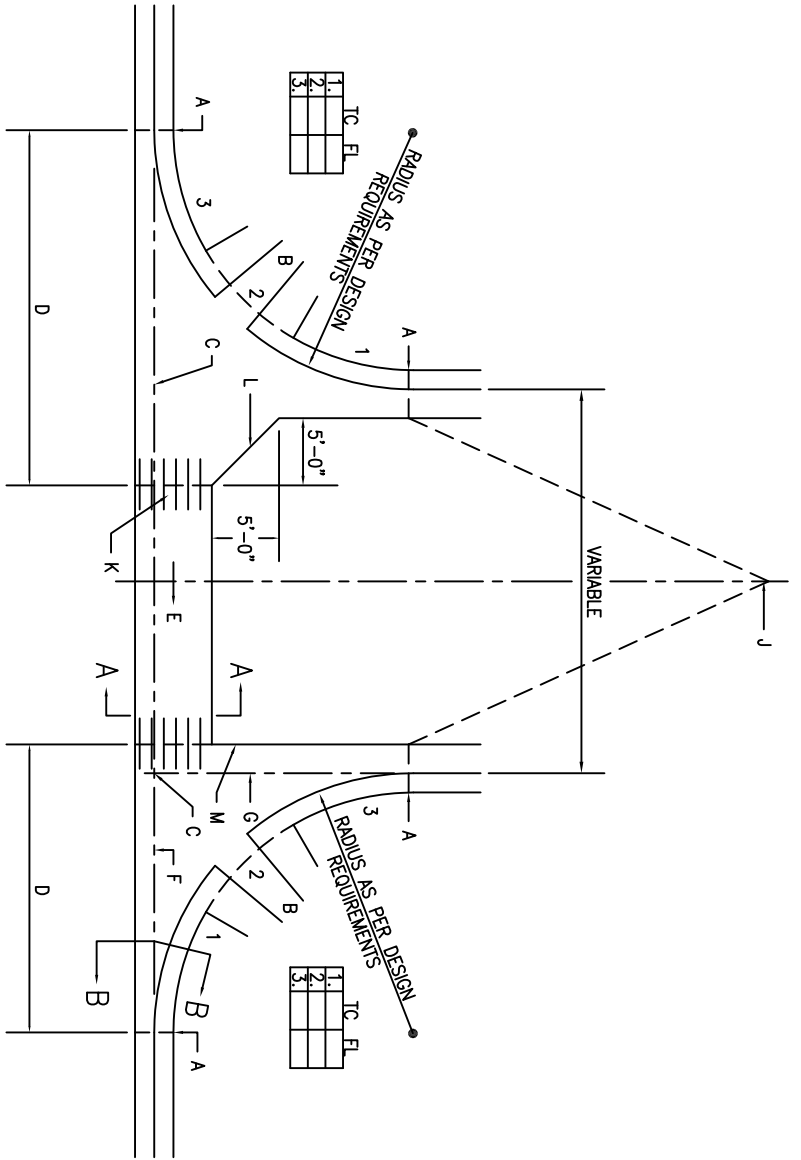


GENERAL NOTES:

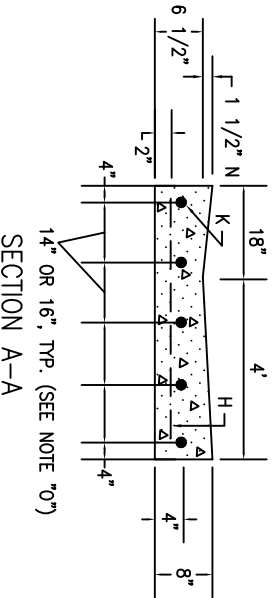
1. DESIGN ELEVATIONS TO BE GIVEN AT EACH END OF THE CURB RETURN (TOP OF CURB ELEV.) AND AT INTERSECTIONS OF PROJECTED FLOWLINES (FLOWLINE ELEV.).
2. ON UPSTREAM AND DOWNSTREAM ENDS OF THE INTERSECTION, VALLEY GUTTER CONSTRUCTION SHALL EXTEND TO THE END OF RETURNS.
3. THE VALLEY GUTTER TO BE REINFORCED WITH 6" X 6" X NO. 6 GA. WIRE MESH.
4. INVERT OF VALLEY GUTTER TO EXTEND FROM FLOWLINE OF UPSTREAM CURB RETURN TO FLOWLINE OF DOWNSTREAM CURB RETURN.
5. CURB FLOWLINE AND TOP OF CURB ELEV. SHOWN IN THE BOX CORRESPOND TO QUARTERPOINTS INDICATED ON THE CURB RETURN IN THE CLOCKWISE DIRECTION.
6. - - - DENOTES 1/2" EXPANSION JOINT.
7. FOR NEW CONSTRUCTION, VALLEY GUTTER SHALL BE CONSTRUCTED PRIOR TO ADJACENT PAVEMENT. ASPHALT CONC. SHALL BE INSTALLED MONOLITHICALLY TO MEET NEW VALLEY GUTTER.
8. PRIOR TO CONSTRUCTION OF NEW VALLEY GUTTER PRIOR TO CONSTRUCTION OF NEW VALLEY GUTTER BE REMOVED AS SHOWN ON PLANS.
9. ENSURE MINIMUM 4" WIDE ADA PATHWAY ACROSS INTERSECTION

CONSTRUCTION NOTES:

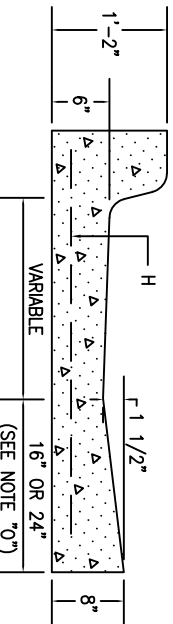
- A. END OF CURB RETURN, SEE NOTE 1.
- B. FOR RAMP DETAILS, SEE DWGS. 2418, 2440, 2441.
- C. INTERSECTION OF FLOWLINES, SEE NOTE 1.
- D. SURFACE AND CURB TO BE MONOLITHIC.
- E. DIRECTION OF FLOW.
- F. FLOWLINE.
- G. PROJECTED FLOWLINE OF 1/2" INVERT, SEE NOTE 2.
- H. 6" X 6" NO. 6 GA. WIRE MESH.
- J. BEGIN GROWN WARP TO STRAIGHT SECTION WHERE SPECIFIED ON PLANS, OR INDICATED BY THE ENGR.
- K. NO. 4 BARS 3'-0" LONG AT 16" O.C.
- L. ALTERNATE A, WITH FILLET AS PER PLANS.
- M. ALTERNATE B, NO FILLET AS PER PLANS.
- N. INVERT TO MATCH INVERT OF EXISTING CURB AND GUTTER. INVERT DEPTH MAY BE REDUCED TO 0.75" TO MEET ADA.
- O. 16" OR 24" MATCH ADJACENT GUTTER PAN WIDTH IF 24" GUTTER REBAR SPACING IS 16" APART WITH REBAR 4" FROM THE EDGE. IF 16" GUTTER REBAR SPACING IS 14" WITH REBAR 4" FROM EDGE.



PLAN



SECTION A-A
1 1/2" OR 16", TYP. (SEE NOTE "O")



SECTION B-B
(BEGIN TRANSITION OF INVERT DEPTH)

CITY OF ALBUQUERQUE

PAVING

VALLEY GUTTER

REVISIONS

10/2022

DWG. 2420

OCTOBER 2022