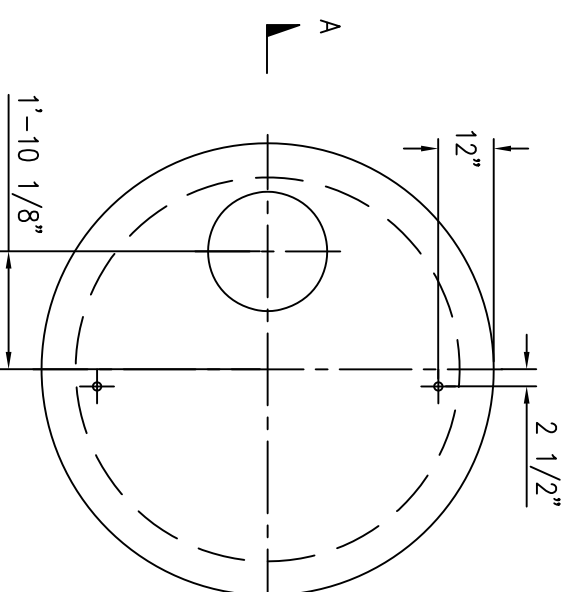
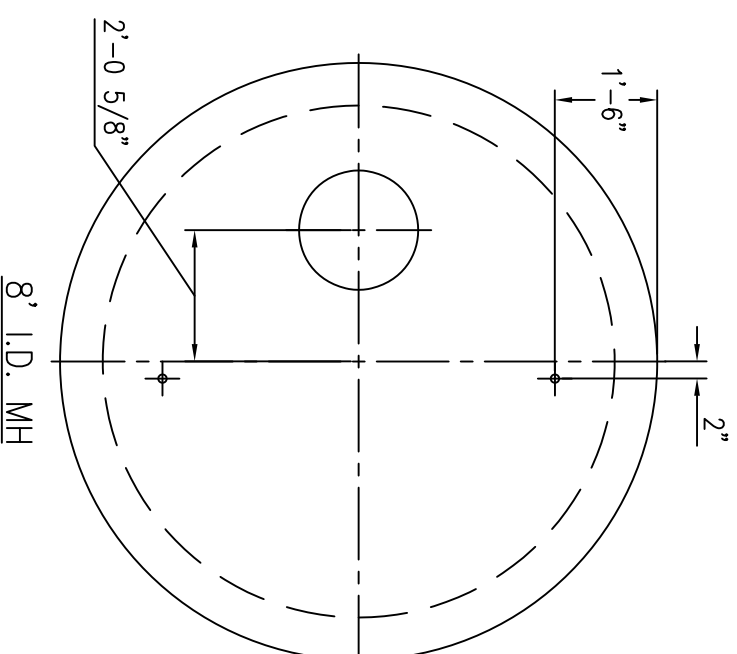


4' I.D. MH

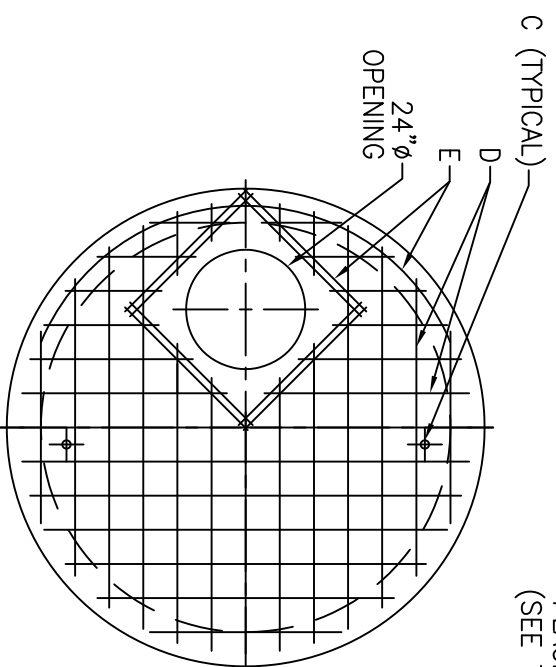


6' I.D. MH

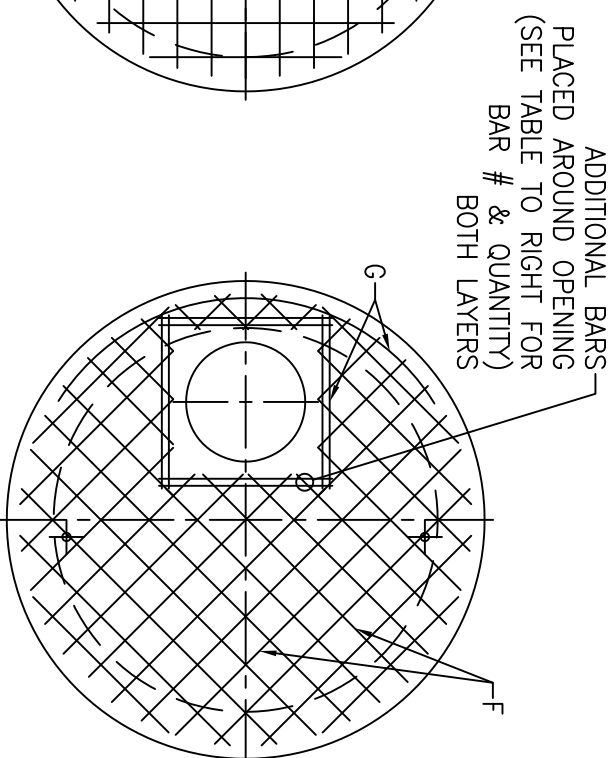


8' I.D. MH

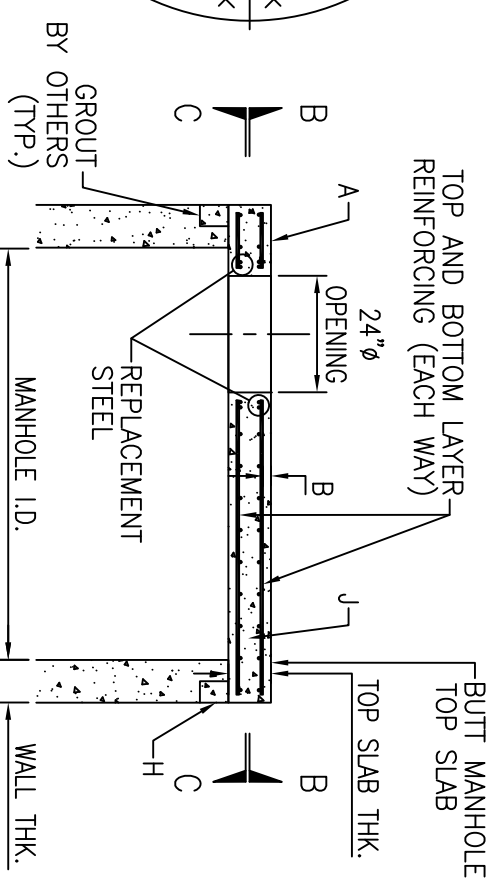
PLAN



SECTION B-B
TOP MAT



SECTION C-C
BOTTOM MAT



SECTION A-A
FLAT TOP SLAB REINFORCEMENT DETAIL

CONSTRUCTION NOTES

- A. PRECAST REINFORCED CONCRETE MANHOLE TOP SLAB.
- B. ALL BARS TO HAVE 1 1/2" MIN. COVER.
- C. 1" PIPE SLEEVE VERTICALLY THROUGH TOP SLAB.
- D. TOP MAT NO. 4 BARS 6" O.C. EACH WAY FOR 4', 6' AND 8' I.D. MANHOLES.
- E. NO. 4 BARS
- F. BOTTOM MAT NO. 4 BARS 6" O.C. EACH WAY FOR 4' AND 6' I.D. MANHOLES, NO. 8 BARS 8" O.C. EACH WAY FOR 8' AND 10' I.D. MANHOLES.
- G. NO. 4 BARS FOR 4' AND 6' I.D. MANHOLES.
- H. WHEN PRECAST MANHOLE SECTIONS ARE USED, TOP SLAB SHALL BE MODIFIED TO SHAPE OF APPROPRIATE SIZE TONGUE AND GROOVE JOINT.
- J. CONCRETE, SEE SECTION 101.

MANHOLE I.D.	48"	60"	72"	96"	120"
TOP SLAB THK.	8"	8"	8"	10"	10"
WALL THK.	5"	6"	7"	9"	11"
TOP LAYER STEEL (IN ² /FT)	0.40	0.40	0.40	0.40	0.40
BTM LAYER STEEL (IN ² /FT)	0.40	0.43	0.50	1.19	1.19
REPLACEMENT STEEL (BAR #)	(8)#5's	(8)#5's	(8)#6's	(8)#8's	(8)#8's
APPROX. WEIGHT (LBS.)	1,521	2,513	3,720	8,468	13,355

- NOTES:
- 1) $f'_c = 4000$ psi (MIN.)
 - 2) $f_y = 60,000$ (MIN.)
 - 3) 1 1/2" MINIMUM CLEAR CONCRETE COVER OVER REINFORCEMENT
 - 4) HS-20 LIVE LOAD
 - 5) SEE TABLE FOR APPROXIMATE WEIGHT

REVISIONS	CITY OF ALBUQUERQUE
10/2022	DRAINAGE STORM SEWER CONCRETE MANHOLE TOP SLAB TYPE "C" DWG. 2212 OCTOBER 2022