



# Emergency Support Function (ESF) #1 **Transportation**

Primary Agency  
**Albuquerque Transit Department**



**City of Albuquerque, New Me1ico**  
**Emergency Support Function (ESF) #1**  
**TRANSPORTATION**

**Purpose:**

1. Coordination of transportation infrastructure operation and service restoration activities.
2. Enables departments and emergency support functions requiring use of the transportation systems to perform their missions following an emergency.

**Primary:**

- Albuquerque Transit Department

**Support:**

- Airport, Airfields
- Albuquerque Fire Department
- Albuquerque Parks and Recreation Department
- Albuquerque Police Department
- Albuquerque Senior Affairs Department
- Albuquerque Solid Waste Management Department
- Ambulance Providers
- Bernalillo County Sheriff's Department
- Commercial and Private Sector Transportation Companies
- Community and Faith Based Organizations
- New Mexico Department of Transportation

**Likely Tasks:**

- Determine condition, status of the CABQ's Transportation resources.
  - Develop comprehensive list of available CABQ's vehicles and equipment
  - Coordinate with support agencies in providing sufficient vehicle fuel supplies to the CABQ's Agencies, emergency response organizations, and areas along evacuation routes.
- Maintain liaison with all support departments and radio communication with field personnel.
- Provide transportation services to assist in damage assessment operations.
- Continually assess the situation to address the most critical transportation needs and develop strategies.

**Likely Tasks Continued:**

- Coordinate procurement of rental vehicles and other needed equipment with operators and independent maintenance locations as required.
- Coordinate field maintenance support, to include, but not limited to, fuel, lubricants, tires and vehicles parts.
- Coordinate a continuous source and supply of food, water, and ice for ESF #1 personnel.
- Receive, prioritize and coordinate requests for transportation resources from field incident commanders. Sources can include:
  - CABQ departments.
  - CABQ EOC.
  - Private companies: bus, taxi, trucking, car/truck rentals.
  - Community Based Organizations.
  - Commercial carriers.
  - Ambulance companies.
- Coordinate with EOC to provide evacuation transportation assistance where necessary.
- Determine condition, status of CABQ transportation routes. Develop and maintain status map:
  - Routes that are open unconditionally, closed, or still un-inspected,
  - Bridges that are open without restriction, open with restrictions, closed until replaced, or yet to be inspected, and
  - Bridges that have been visually inspected but require engineering tests to make further determinations.
- Determine condition, status of CABQ traffic control systems. Develop and maintain status maps.
- Determine present and future need for transportation resources.

**State of New Mexico**

**Primary:**

- NM Department of Transportation

**Support:**

- General Services Department
- Environment Department
- Department of Military Affairs
- Department of Public Safety
  - State Police Division
  - Motor Transportation Division

**Likely Actions:**

- Aviation/airspace management and control.
- Transportation safety.
- Restoration/recovery of transportation infrastructure.
- Movement restrictions.
- Damage and impact assessment.

**Federal Government**

**Primary:**

- Department of Transportation

**Support:**

- Department of Agriculture
- Department of Commerce
- Department of Defense
- Department of Energy
- Department of Homeland Security
- Department of the Interior
- Department of Justice
- Department of State
- General Services Administration
- U.S. Postal Service

**Likely Actions:**

- Identify resource requirements for transportation and coordinates their allocation.
- Assess, report damage to the transportation infrastructure; analyze impacts on operations.
- Coordinate alternate transportation services.
- Coordinate the recovery, restoration, and safety/security of the transportation infrastructure.
- Coordinate and support prevention / mitigation among transportation infrastructure stakeholders.
- Coordinate: prioritization and/or allocation of civil transportation capacity; emergency highway funding; hazardous material containment response; safety and security related actions concerning movement restrictions, closures, quarantines, and evacuations.
- Provide technical assistance for evacuation or movement restriction planning.

---

## EMERGENCY SUPPORT FUNCTION #1

# TRANSPORTATION

**Primary Agency:** City of Albuquerque Transit Department

**Primary Coordinator:** Transit Department Manager

**Support Organizations:**

- Airport, Airfields
- Albuquerque Fire Department
- Albuquerque Police Department
- Albuquerque Parks and Recreation Department
- Albuquerque Senior Affairs Department
- Albuquerque Solid Waste Management Department
- Ambulance Providers
- Bernalillo County Sheriff's Department
- Commercial and Private Sector Transportation Companies
- Community and Faith Based Organizations
- New Mexico Department of Transportation

---

### ***I. Introduction.***

#### **A. PURPOSE.**

1. The purpose of the Emergency Support Function (ESF) #1 Annex is to provide coordinated transportation capabilities for disaster prevention, protection, response, and recovery related through maximized use of available resources and personnel across all mission areas.
2. Enables agencies, and emergency support functions requiring use of the transportation systems to perform their missions following an emergency. In the context of this plan transportation refers to the resources and assets necessary to move goods and people.

#### **B. SCOPE.**

Assistance provided by Transportation (ESF #1) includes, but is not limited to:

1. Coordinating transportation activities and resources to support other Emergency Support

Functions (ESFs) transportation needs during the response phase following an emergency. Indirectly all surface and aviation modes of transportation.

2. Facilitate damage assessments of systems and infrastructure to establish priorities and determine needs of available transportation resources.
3. Prioritization and/or allocation of all government transportation resources.
4. Processing all transportation requests from City of Albuquerque departments and emergency support functions.
5. Facilitate movement of the public, including access and functional needs population, in coordination with other transportation agencies.

**C. SITUATION.**

1. An emergency may severely impair the transportation infrastructure and interrupt transportation services. Localized transportation activities may be disrupted by a lack of useable surface transportation infrastructure.

The City of Albuquerque (CABQ) is subject to multiple natural and human-caused hazards, each of which can be expected to require transportation capabilities to support response to an incident. Personnel representing multiple organizations will need to coordinate to provide transportation services to support response operations and protective actions such as evacuation.

**D. PLANNING ASSUMPTIONS.**

1. Emergency incidents impacting transportation infrastructure and capabilities can occur in multiple locations within the city, with or without warning.
2. Emergency response and recovery efforts will likely require transportation services to fulfill essential missions.
3. Coordination of transportation activities across all mission areas will improve capabilities to respond to and recover from an emergency incident impacting CABQ.
4. ESF #1 departments and organizations will fulfill responsibilities assigned in this annex to the best of their ability.
5. The damage to the transportation infrastructure may influence the means and accessibility level for relief services and supplies.

6. Disaster responses, which require usable transportation routes, will be difficult to coordinate effectively during the immediate post-emergency period.
7. Clearing of access routes will permit a sustained flow of emergency relief, although localized distribution patterns may be disrupted for a significant period.

**E. POLICIES.**

1. Transportation planning will be directed toward satisfying the needs of responding agencies requiring transportation to perform their assigned emergency missions, and the movement of people away from disaster areas.
2. Activation of ESF #1 will be determined by the Albuquerque Office of Emergency Management (OEM) Director or designee based on the needs of the incident.
3. Activities within ESF #1 will be conducted in accordance with the National Incident Management System (NIMS) and will utilize the Incident Command System (ICS).
4. Day-to-day organizational structures of the city will be maintained to the degree feasible in emergency and disaster incidents.
5. Transportation planning will include the utilization of available primary and support agency capabilities.
6. All government transportation resources will be available for emergency use.
7. If CABQ resources are exhausted or overwhelmed, additional support and assistance can be requested by the CABQ Emergency Operations Center (EOC) from the New Mexico Department of Homeland Security and Emergency Management (NMDHSEM) EOC.

***II. Concept Of Operations.***

**A. GENERAL.**

1. ESF #1 Transportation is the responsibility of all the transportation systems and providers within CABQ. During a CABQ, Emergency Operations Center (EOC) or transportation agency Department Operations Center (DOC) activation, the implementation of the ESF #1 Transportation Annex will be led by the City of Albuquerque Transit Department and supporting departments.
2. During emergencies, access to normal transportation systems could be disrupted leaving many people without transportation. Transportation resources may be obtained from CABQ departments, the private sector, and voluntary organizations. In critical life and

property saving situations, regional, state, and federal resources may be available as temporary augmentation.

3. Existing mutual aid agreements may be able to augment and satisfy a temporary increase in local needs. If local capabilities are exceeded, support may be available from state and federal agencies. (See tab page for a list of agencies.)
4. The process of furnishing emergency transportation services in the CABQ during a major emergency involves two actions. First, essential immediate transportation needs are identified and actions are taken to provide for these needs. Second, as soon as possible, future continuing needs for transportation service and expected future transportation capabilities are estimated. Decisions are then made and actions taken to direct these expected future capabilities to meet the needs most essential to the emergency and protection of persons in the hazard/reception areas.
5. Emergency operations for most transportation services will be an extension of normal services. However, during widespread multiple-site emergencies, transportation personnel, resources and facilities may be in limited.
6. The CABQ Transit Department is the primary agency for coordinating with provider agencies for emergency transportation needs. Other CABQ departments may assist in this effort.
7. Coordination among transportation providers is necessary to ensure emergency operational readiness. Each agency or organization having responsibility for transportation must develop operating instructions and resource listings to support this ESF.
8. A listing of available emergency transportation resources is developed by the primary ESF Agency and is maintained in the EOC.
9. Transportation Primary Roles.
  - a. ESF #1 Transportation.
    - (1) The primary purpose of the ESF #1 Transportation is to collect and disseminate information about the status, needs, and available resources of the transportation systems and infrastructure within CABQ. ESF #1 will ensure that information is sufficiently verified and coordinated with EOC Operations Section branches, CABQ departments, and other transportation entities. During an EOC activation, the ESF #1 provides a single point within the City wherein all transportation-related information is collected and a common operating picture

is developed. With this information, ESF #1 will facilitate citywide coordination of the following activities:

- Support route clearance and recovery activities.
- Designate ingress/egress routes for emergency response vehicles and personnel.
- Coordinate response operations designed to restore and maintain normal operations of CABQ public transportation systems.
- Designate evacuation routes and provide evacuation information to emergency responders and the Joint Information Center (JIC).
- Provide transportation for CABQ Disaster Service Workers (DSWs) and emergency responders during recall operations, to include busing employees from outside the city to various work locations within the city.
- Assist with the transport of emergency commodities and assets.

(2) Transportation Positions.

According to the needs of the event, the following positions may be activated within the Transportation ESF.

(a) Transportation Branch Coordinator: The Transportation Branch Coordinator is the designated branch lead, and is responsible for coordinating information to and from the Transportation and the EOC Operations Section. The Transportation Coordinator will be staffed by a representative from Transit.

(b) The Transportation Branch Coordinator is responsible for the following:

- Collect and compile situation status reports from transportation DOCs on a recurring basis; submit situation status reports to the Planning Section Situation Status Unit; provide updates to the Operations Support Section Chief
- Disseminate EOC Action Plans and Cumulative Situation Status Reports to branch staff and associated DOCs
- Ensure that objectives proposed to EOC Action Plan meet the needs to bring the situation under control.
- Coordinate with regional partners to provide resources to restore air, and land transportation systems.

(3) Route Recovery Unit Leader

The Route Recovery Unit Leader/ Operations Road Supervisor will coordinate with the Infrastructure Branch to gather assessment data about damage to

roads and highways, and with the Infrastructure Branch to identify priority routes, develop, and implement route recovery plans. The Route Recovery Unit Leader will also coordinate with the Law Enforcement unit and the Human Services Branch to facilitate the following:

- Evacuation transportation
  - Transportation of the ill, injured, and those in custody with law enforcement
  - Transportation of Disaster Service Workers and emergency responders during recall operations
  - Transportation of emergency commodities and assets
- (4) Mass Transit Unit Leader: The Mass Transit Unit Leader will coordinate the assessment of all mass transit systems, facilities, and infrastructure within CABQ. The Mass Transit Unit will then coordinate mass transit restoration and recovery activities with the appropriate local and/or regional entities.
- (5) Air Transportation Unit Leader: The Air Unit Leader will coordinate the assessment and restoration of air transportation systems, facilities, and infrastructure. Information and operations will be coordinated with air transportation entities throughout the region

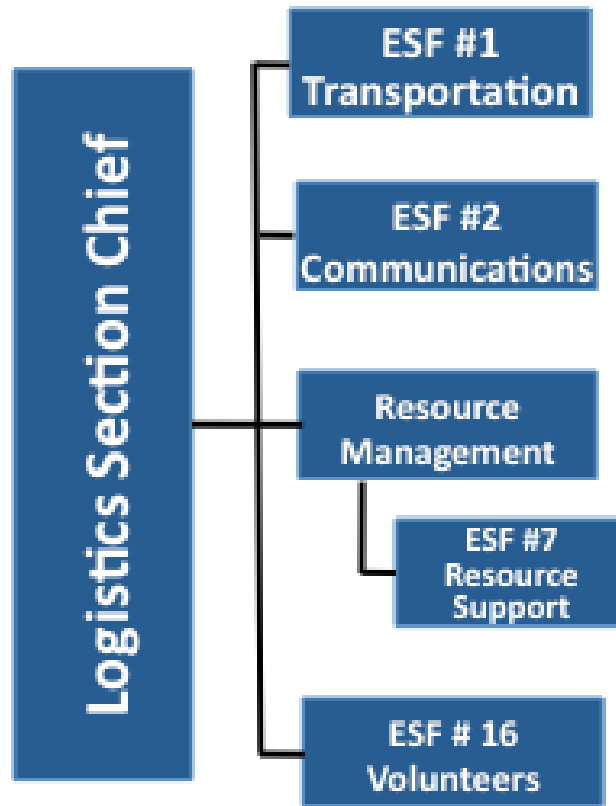
## **B. RESPONSE ORGANIZATION & STRUCTURE.**

### 1. Organizational Chart.

- ESF #1 is positioned within the Logistics Section during an EOC activation, each ESF under Logistics Section will be headed by a CABQ representative carrying out their ESF role.



### The Organizational Structure Of The Logistics Section



v080115

**C. PRIMARY DEPARTMENT RESPONSIBILITIES/TASKS BY PHASE**

<b>PRIMARY DEPARTMENT RESPONSIBILITIES/TASKS BY PHASE</b>	
<b>ALBUQUERQUE TRANSIT DEPARTMENT</b>	
<b>Pre-Emergency</b>	<ul style="list-style-type: none"> <li>• Primary and support departments will collaborate and coordinate with the Office of Emergency Management to:</li> <li>• Maintain this Emergency Support Function (ESF).</li> <li>• Identify and prioritize critical roadways.</li> <li>• Develop inventory and sources of transportation resources, staffing resources and equipment to include supplies and maintenance.</li> <li>• Secure contracts for emergency supply of combustible fuel, from outside of the immediate area, for use in CABQ vehicles.</li> <li>• Develop emergency action checklists and Standard Operating Procedures (SOPs).</li> </ul>
<b>Emergency</b>	<ul style="list-style-type: none"> <li>• When notified of an emergency situation, report to or establish communications with the CABQ EOC, as directed.</li> <li>• Provide coordination of transportation assistance to other Emergency Support Functions, CABQ departments, and Community Based Organizations requiring transportation capacity to perform emergency response missions.</li> <li>• Coordinate availability of motor vehicles involved in emergency operations.</li> <li>• Ensure that support agencies are on alert as appropriate and that their transportation resources, equipment supplies, and staff are placed in the appropriate readiness status.</li> </ul>
<b>Emergency Operations Center (EOC)</b>	<ul style="list-style-type: none"> <li>• Staff the ESF #1 position in the EOC.</li> <li>• Determine condition, status of transportation resources.</li> <li>• Develop comprehensive list of available vehicles and equipment.</li> <li>• Coordinate with support agencies in providing sufficient fuel supplies to agencies, emergency response organizations, and areas along evacuation routes.</li> <li>• Maintain liaison with all support departments and communication with field personnel.</li> <li>• Determine present and future need for transportation resources.</li> <li>• Continually assess the situation to address the most critical transportation needs and develop strategies.</li> <li>• Receive, prioritize, and coordinate requests for transportation resources from field incident commanders. Sources can include:               <ul style="list-style-type: none"> <li>– Departments.</li> <li>– Private companies: bus, taxi, trucking, car/truck rentals.</li> <li>– NGOs.</li> </ul> </li> </ul>

<b>PRIMARY DEPARTMENT RESPONSIBILITIES/TASKS BY PHASE</b>	
<b>ALBUQUERQUE TRANSIT DEPARTMENT</b>	
	<ul style="list-style-type: none"> <li>– Commercial carriers.</li> <li>– Ambulance companies.</li> <li>• Coordinate procurement of rental vehicles and other needed equipment with operators and independent maintenance locations as required.</li> <li>• Ensure field maintenance support, to include, but not limited to, fuel, lubricants, tires and vehicles parts.</li> <li>• Ensure a continuous source and supply of food, water, and ice for ESF #1 personnel.</li> <li>• Provide transportation services to assist in damage assessment operations.</li> <li>• Coordinate needs with other regional EOCs and the State EOC, as necessary.</li> <li>• Coordinate with other regional EOCs and the State EOC to provide evacuation transportation assistance where necessary.</li> <li>• Determine condition, status of transportation systems and routes. Develop and maintain status map showing:               <ul style="list-style-type: none"> <li>– Routes that are open unconditionally.</li> <li>– Routes that are closed.</li> <li>– Routes that have not yet been inspected.</li> <li>– Bridges that are open without restriction.</li> <li>– Bridges that are open with restrictions.</li> <li>– Bridges that are closed until replaced.</li> <li>– Bridges that have yet to be inspected, and</li> <li>– Bridges that have been visually inspected but require engineering tests to make further determinations.</li> </ul> </li> <li>• Close infrastructure determined to be unsafe.</li> <li>• Post signing and barricades.</li> <li>• Prioritize and/or allocate the resources necessary to maintain and restore the transportation infrastructure and services to support other ESFs.</li> <li>• Provide traffic control assistance and damage assessment of the transportation infrastructure</li> <li>• Determine the most viable transportation networks to, from and within the emergency area and regulate the use of these transportation networks.</li> <li>• Identify, prioritize, procure, and allocate available resources to maintain and restore the use of the transportation infrastructure.</li> <li>• Make available personnel, equipment and other assets to assist in the restoration and maintenance of the transportation infrastructure.</li> <li>• Provide frequent updates to the EOC Logistics Section Chief as to the</li> </ul>

<b>PRIMARY DEPARTMENT RESPONSIBILITIES/TASKS BY PHASE</b>	
<b>ALBUQUERQUE TRANSIT DEPARTMENT</b>	
	<p>status of the transportation infrastructure.</p> <ul style="list-style-type: none"> <li>• Maintain records of cost and expenditures to accomplish this ESF and forward them to the EOC Finance/ Administration Section Chief.</li> <li>• Participate with the Joint Information Center operations as assigned.</li> </ul>
<b>Recovery Actions</b>	<ul style="list-style-type: none"> <li>• Ensure arrangements are made with the Finance Section for issuance of emergency fuel credit cards to be used at private fuel stations outside of damage area in case that the fueling facilities are damaged.</li> <li>• Upon request, provide transportation resources to assist recovery activities.</li> <li>• Develop recovery actions and strategies.</li> <li>• Prepare and submit emergency requisition for goods and services necessary to restore operations.</li> <li>• Long Term: Restore critical transportation routes, facilities, and services</li> </ul>

**D. SUPPORT ORGANIZATION'S RESPONSIBILITIES AND TASKS.**

<b>SUPPORT ORGANIZATIONS' RESPONSIBILITIES AND TASKS</b>	
<b>Airport, Airfields</b>	<ul style="list-style-type: none"> <li>• Coordinate and report damage assessment of air transportation capabilities.</li> <li>• Identify alternate emergency air transportation facilities and resources.</li> <li>• Manage emergency medical air transportation logistics at airport.</li> <li>• Record costs and expenditures. Submit as requested.</li> </ul>
<b>Albuquerque Fire Department</b>	<ul style="list-style-type: none"> <li>• Provide vehicles and personnel for emergency use.</li> <li>• Provide medical transportation services.</li> </ul>
<b>Albuquerque Parks and Recreation Department</b>	<ul style="list-style-type: none"> <li>• Provide vehicles and drivers to assist.</li> <li>• Provide maintenance mechanics and fuel for vehicles and equipment.</li> <li>• Assist with shelter facilities operations and donation centers transportation needs.</li> <li>• Record costs and expenditures and forward them to this ESF Group Supervisor.</li> </ul>
<b>Albuquerque Police Department</b>	<ul style="list-style-type: none"> <li>• Provide traffic control assistance.</li> <li>• Assist with determining the most viable transportation networks to, from and within the emergency area and regulate the use of these transportation networks.</li> <li>• Provide situational information to the ESF primary department when a significant change in the transportation infrastructure is found.</li> </ul>

<b>SUPPORT ORGANIZATIONS' RESPONSIBILITIES AND TASKS</b>	
	<ul style="list-style-type: none"> <li>• Provide frequent updates to the Operations Section Chief at the EOC as to the status of the transportation infrastructure.</li> <li>• Record costs and expenditures; forward them to the ESF #1 Group Supervisor.</li> </ul>
<b>Albuquerque Senior Affairs Department</b>	<ul style="list-style-type: none"> <li>• Provide vehicles and drivers to assist.</li> <li>• Provide Fuel for busses.</li> <li>• Provide damage assessment information.</li> <li>• Record costs and expenditures and data to the ESF #1 Group Supervisor.</li> </ul>
<b>Albuquerque Solid Waste Management Department</b>	<ul style="list-style-type: none"> <li>• Provide traffic control assistance.</li> <li>• Assist with determining the most viable transportation networks to, from and within the emergency area and regulate the use of these transportation networks.</li> <li>• Provide essential information to the Transportation Group Supervisor when a significant change in the transportation infrastructure is found.</li> </ul>
<b>Ambulance Providers</b>	<ul style="list-style-type: none"> <li>• Provide vehicles and personnel for emergency use.</li> <li>• Provide medical transport.</li> <li>• Record costs and expenditures. Submit as requested</li> </ul>
<b>Bernalillo County Sheriff's Department</b>	<ul style="list-style-type: none"> <li>• Provide security and traffic control assistance.</li> <li>• Assist with determining the most viable transportation networks to, from and within the emergency area and regulate the use of these transportation networks.</li> <li>• Provide essential information to the Transportation Group Supervisor when a significant change in the transportation infrastructure is found.</li> </ul>
<b>Commercial and Private Sector Transportation</b>	<ul style="list-style-type: none"> <li>• Provide busses and drivers to assist.</li> <li>• Provide maintenance mechanics and fuel for busses.</li> <li>• Provide damage assessment information.</li> <li>• Record costs and expenditures; forward them to this ESF Group Supervisor.</li> </ul>
<b>Community and Faith Based Organizations</b>	<ul style="list-style-type: none"> <li>• Provide vehicles and drivers to assist.</li> <li>• Record costs and expenditures and forward them to the ESF #1 Group Supervisor.</li> </ul>
<b>New Mexico Department of Transportation</b>	<ul style="list-style-type: none"> <li>• Provide traffic control assistance.</li> <li>• Assist with determining the most viable transportation networks to, from and within the emergency area and regulate the use of these transportation networks.</li> <li>• Provide essential information to the Transportation Group Supervisor when a significant change in the transportation infrastructure is found.</li> <li>• Perform all duties necessary to protect state highways.</li> </ul>

SUPPORT ORGANIZATIONS' RESPONSIBILITIES AND TASKS	
	<ul style="list-style-type: none"> <li>• Remove or reduce hazards on the highways that tend to endanger the traveling public.</li> <li>• Close or restrict any portion of the state highway whenever the conditions of the state highway are reduced or continued use will greatly damage that state highway.</li> <li>• Mobilize personnel and equipment required for emergency engineering services on state highways.</li> <li>• Provide assistance for hazardous materials incidents.</li> <li>• Provide communication for emergency response operations.</li> </ul>

**E. LIFE SAFETY ASSESSMENT.**

An initial EOC priority is to gather as much intelligence about the extent of damages and the impact on people as soon as possible. The Transit Department must coordinate with other transportation providers and submit situation and damage reports on a timely basis as determined by the EOC Planning Section.

**F. EVACUATION.**

1. Evacuation will be coordinated with the EOC to ensure the evacuees are moved to an appropriate shelter, and others needing special assistance are provided for. The Transportation Group will ensure appropriate transportation support.
2. Domestic pets, large animals, and livestock may also need to be evacuated and require transportation resources. These activities will be coordinated by the ESF #11 Animal and Veterinary Services.

**G. FIELD OPERATIONS.**

1. Emergency actions may include:
  - Evacuation.
  - Mass casualty transport.
  - Mobile shelter.
  - Transport of emergency responders and resources.

### ***III. Response Actions.***

#### **A. NOTIFICATION.**

Upon notification by CABQ OEM Director or designee of an incident, the ESF coordinator will notify support departments and organizations of potential need for ESF #1 response in accordance with ESF #1 procedures and checklists. Notification may occur via landline, cell phones, electronic means, and/or two-way radios.

#### **B. ACTIVATION.**

Activation of ESF #1 will be determined by the OEM Duty officer, by the OEM Director or by request of the ESF responding agent based on the needs of the incident.

#### **C. ONGOING ACTIVITIES.**

ESF #1 departments and organizations participate in activities throughout the emergency management cycle:

1. When notified, report to the CABQ EOC.
  - a. Provide coordination of transportation assistance to other Emergency Support Functions (ESFs), CABQ departments, and CBOs requiring transportation capacity to perform emergency response missions.
  - b. Pre-order fuel and top off storage tanks.
  - c. Determine status/condition of transportation system.
  - d. Coordinate availability of motor fuels vehicles involved in emergency operations.
  - e. Provide for storage of equipment and vehicles in a safe place.
  - f. Ensure that support agencies are on alert as appropriate and that their transportation resources, equipment supplies and staff are placed in the appropriate readiness status.
  - g. Provide fuel for CABQ vehicles.
  - h. Provide maintenance and repairs to CABQ vehicles.

**D. DEACTIVATION.**

1. The EOC will be deactivated or the response level will be lowered when the event needs have decreased. Deactivation or change in response level may also occur as a result of a transition of the EOC mission from response to recovery. EOC activation status may be changed when determined appropriate by the EOC Manager.
2. Upon EOC deactivation, ESF #1 responsibilities will either be deactivated or assumed by an appropriate department. Once the decision to deactivate the EOC has been reached, the following activities may be necessary:
  - a. Complete or transfer remaining coordinating activities to the appropriate department operation center (DOC) or ESF(s).
  - b. Coordinate the physical closing of the EOC, to include staff release, equipment pack up, return and inventory.
  - c. Coordinate the release of a public deactivation announcement with the JIC.
  - d. Provide deactivation information and a final status report to all involved response departments and/or coordinating and supporting ESF departments.

***IV. Attachments And References.*****A. ATTACHMENTS.**

None

**B. REFERENCES.**

1. CABQ Evacuation Strategy.
2. CABQ Joint Information Center Plan.
3. Emergency Operations Center Operating Guide.

**C. PROVISIO.**

1. This support annex has been prepared in accordance with the standards of the National Incident Management System and other Federal and State requirements and standards for emergency plans applicable of the plan's preparation date.



2. The plan provides a broad planned framework for response and recovery; it is intended for use in further development for response capabilities, implementation of training and exercises, and defining the general approach to incident response. The actual response to an incident is dependent on:
  - a. The specific conditions of the incident, including incident type, geographic extent, severity, timing, and duration;
  - b. The availability of resources for response at the time of the incident;
  - c. Decisions of incident command staff and political leadership;
  - d. Actions taken by neighboring jurisdictions, the State, and the Federal Government.
  - e. These and other factors may result in unforeseen circumstances, prevent the implementation of plan components, or require actions that are significantly different from those described in the plan.

*This Page Left Blank Intentionally*