

PROJECT DATA

SITE ACREAGE: 1.35 ACRES
GROSS FLOOR AREA: 16,000 S.F.
PARKING REQUIREMENTS: 80 CARS
LESS 10% REDUCTION FOR BUS STOP: 72 CARS
HANDICAPPED PARKING SHOWN: 4 CARS
SMALL CAR PARKING SHOWN: 9 CARS
TOTAL PARKING SHOWN: 77 CARS

NOTE
 • Restaurant uses will be limited to 25% of the gross square footage.
 • Stucco color will be tan
 • ROOF COLOR WILL BE GREY

LEGAL DESCRIPTION: LOT 32-C-1, ALVARADO GARDENS SUBDIVISION UNIT 1

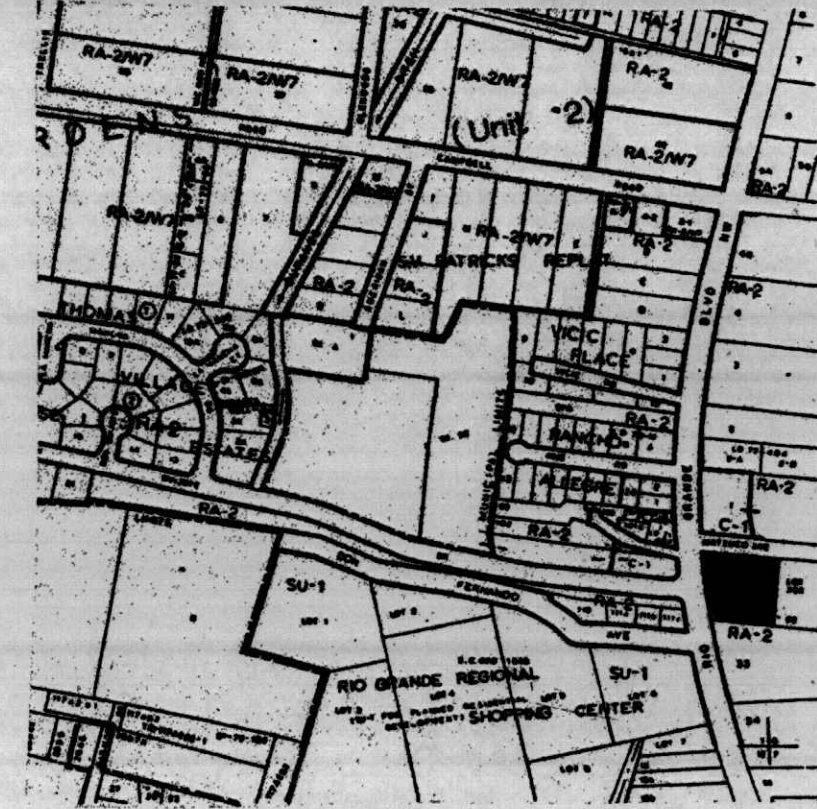
LANDSCAPE NOTES:

1. PLANT MATERIAL WATERING SHALL BE BY AN AUTOMATIC UNDERGROUND IRRIGATION SYSTEM UTILIZING CONVENTIONAL PVC PIPE AND A COMBINATION OF SPRAY HEADS, STREAM BUBBLERS AND FLOOD BUBBLERS.
2. RESPONSIBILITY FOR MAINTENANCE OF PLANT MATERIAL AND THE IRRIGATION SYSTEM SHALL BE BY THE APPLICANT.
3. TOTAL SITE AREA: 1.35
 ON SITE LANDSCAPED AREA: 4764 S.F.
 ROAD MEDIAN LANDSCAPED AREA: 1230 S.F.
 TOTAL LANDSCAPED AREA: 5994 S.F.
 PARKING AREA: 27,976 S.F.
 LANDSCAPED AREA ADJACENT TO OR WITHIN PARKING AREA: 4830 S.F.
 PERCENT OF LANDSCAPED AREAS ADJACENT TO OR WITHIN PARKING AREA TO PARKING AREA: 17%.

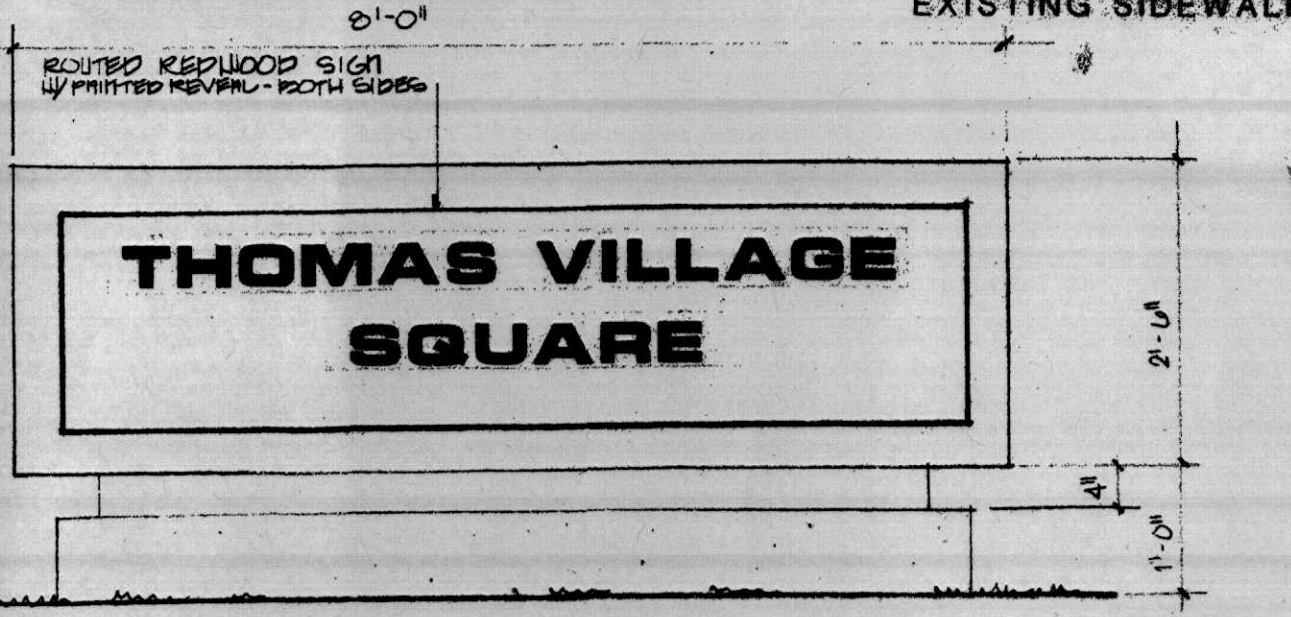
LANDSCAPING LEGEND

-  ARIZONA ASH - 2" CALIPER
-  AFGHAN PINE - 8'-0" HIGH
-  BLUE STAR JUNIPER - 2 GAL.
-  NANDINA - 2 GAL.
-  RED BARBERRY - 2 GAL.
-  BUFFALO JUNIPER - 2 GAL.
-  BOSTON & ENGLISH IVY - 2 GAL.
-  SOD
-  SEASONAL FLOWERS
-  BARK MULCH

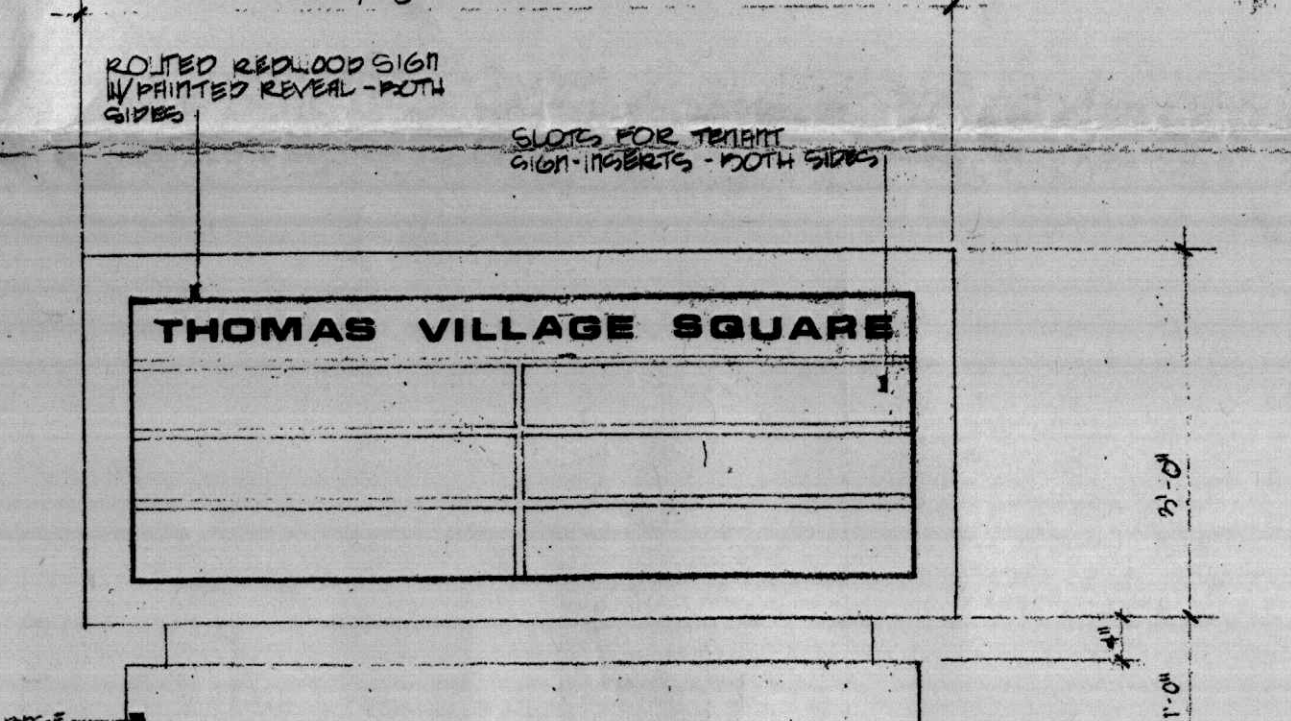
VICINITY MAP



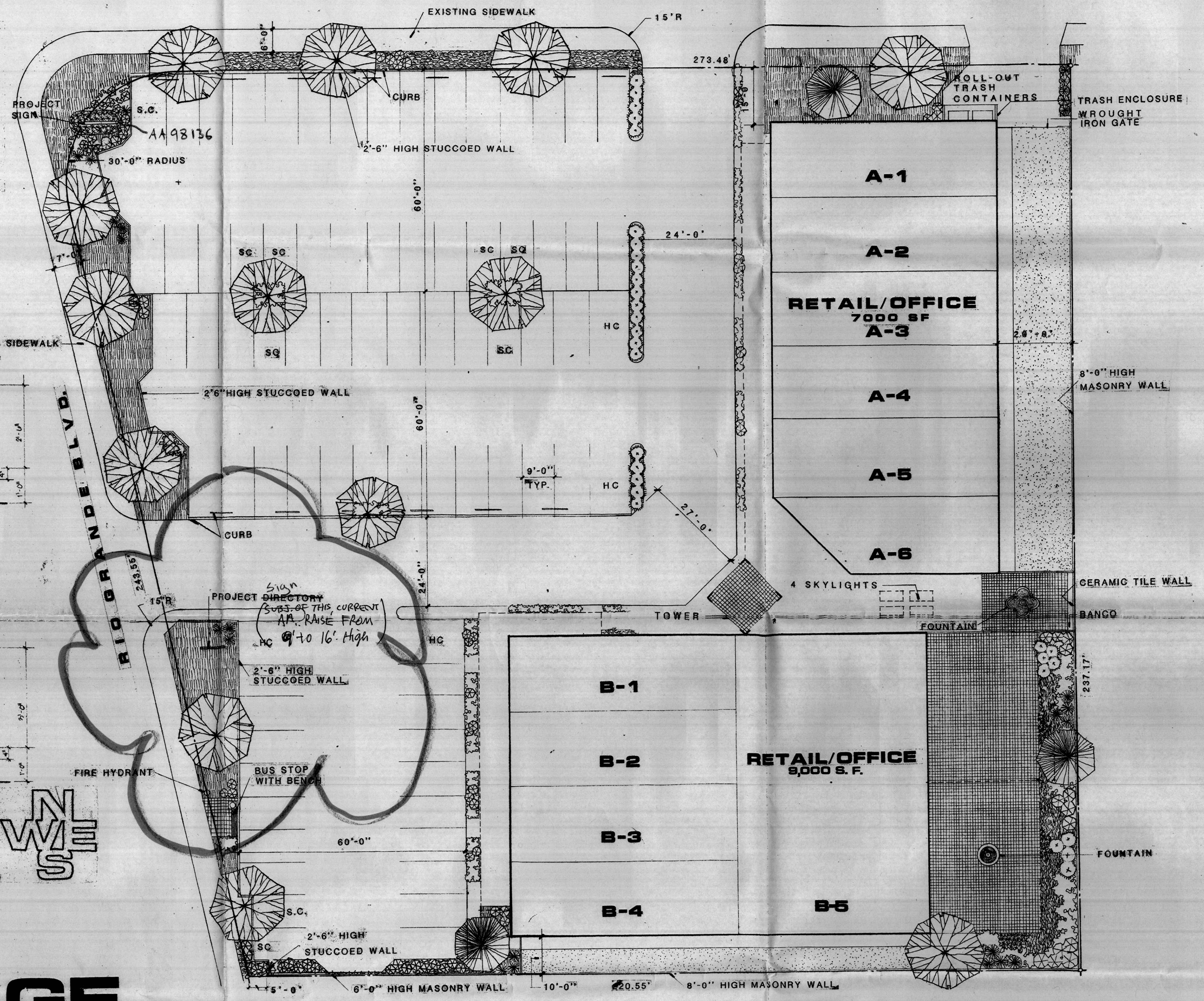
SIGNAGE DETAILS



PROJECT DIRECTORY



MATTHEW AVENUE N. W.



THOMAS VILLAGE SQUARE

SITE PLAN 1/16" = 1'-0"
 REVISED: 6-10-87

Approved as to requirements:
 Parks and Recreation _____ Date _____
 Traffic Engineer _____ Date _____
 City Engineer/AMARCA _____ Date _____

I certify that this area is zoned SU-1 for C-1 Uses and this plan is consistent with the specific development plan approved by the Environmental Planning Commission on April 2, 1985.

Planning Director _____ Date _____

1063003