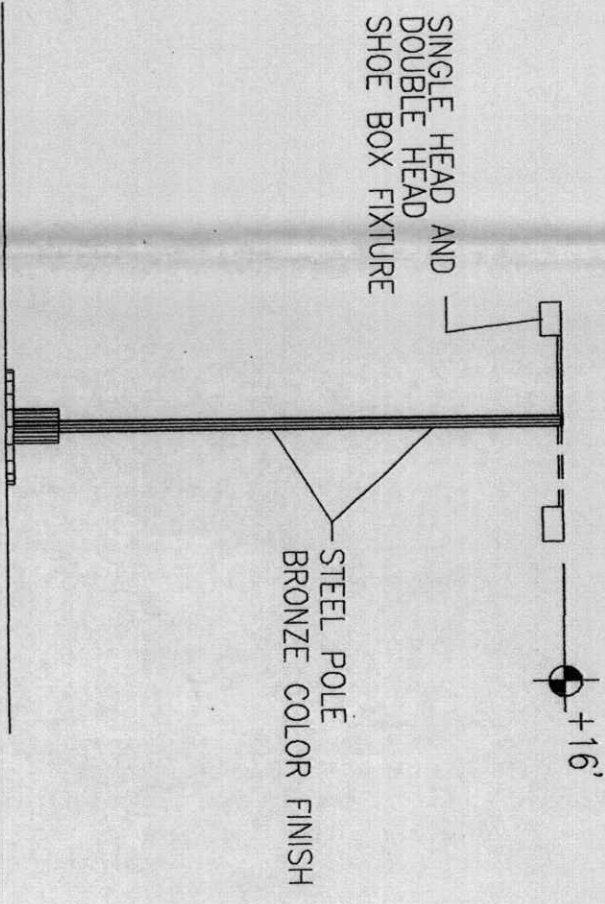
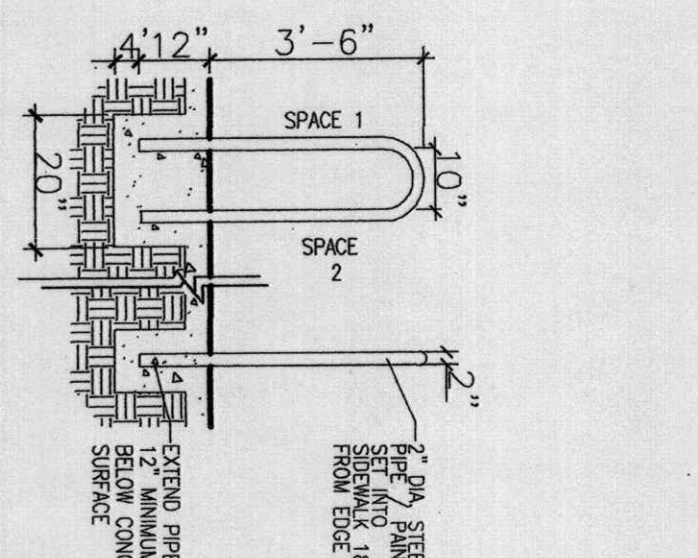


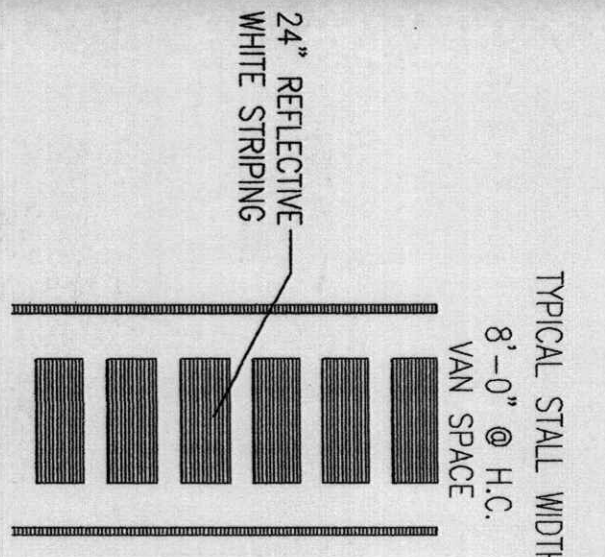
1 HC Ramp
NOT TO SCALE



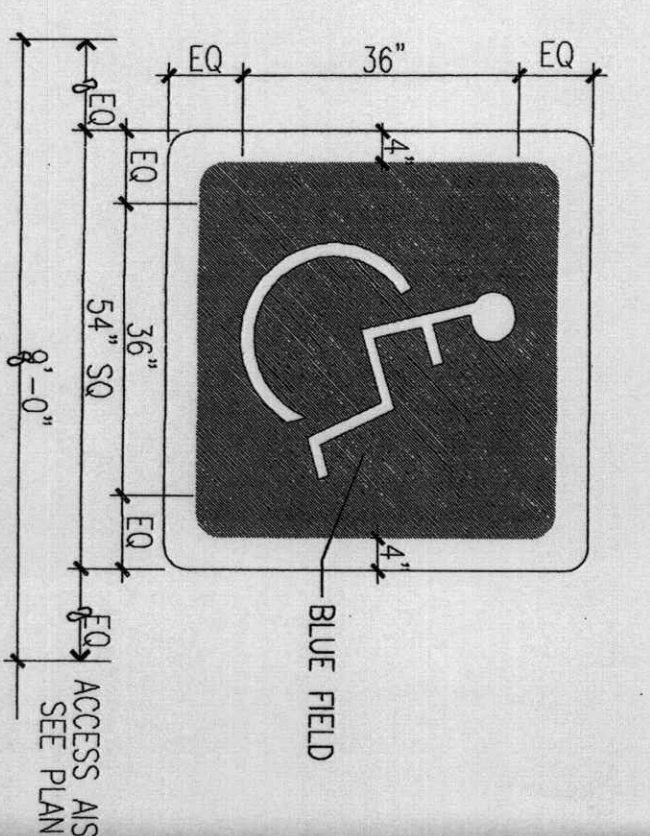
2 Site Lighting Detail
Scale: Not to Scale



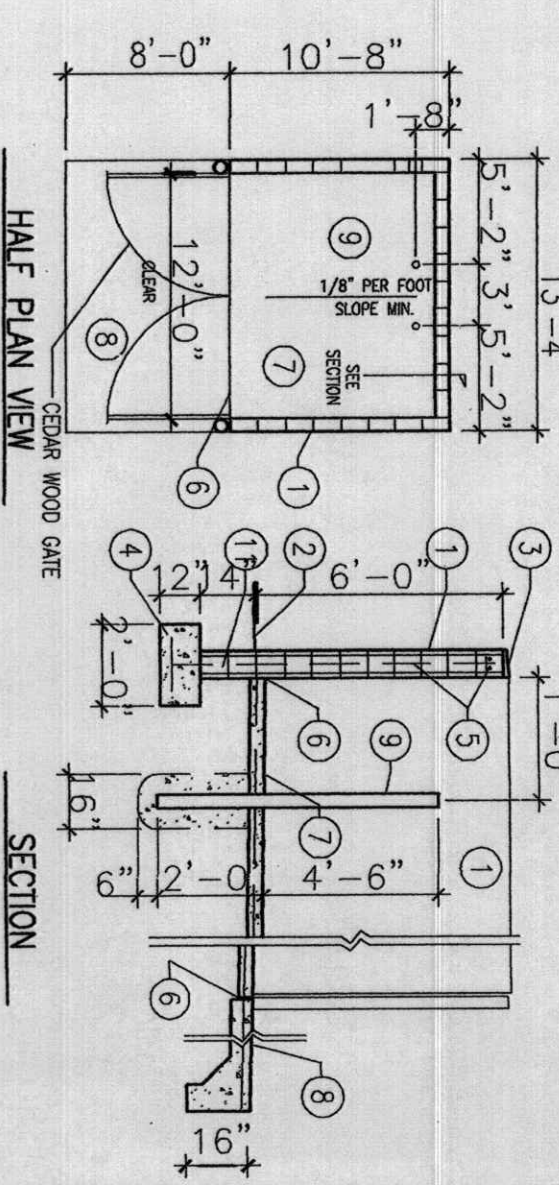
3 Bike Rack Detail
Scale: Not to Scale



5 HC Parking Striping
NOT TO SCALE



6 HC Pavement Sign
NOT TO SCALE



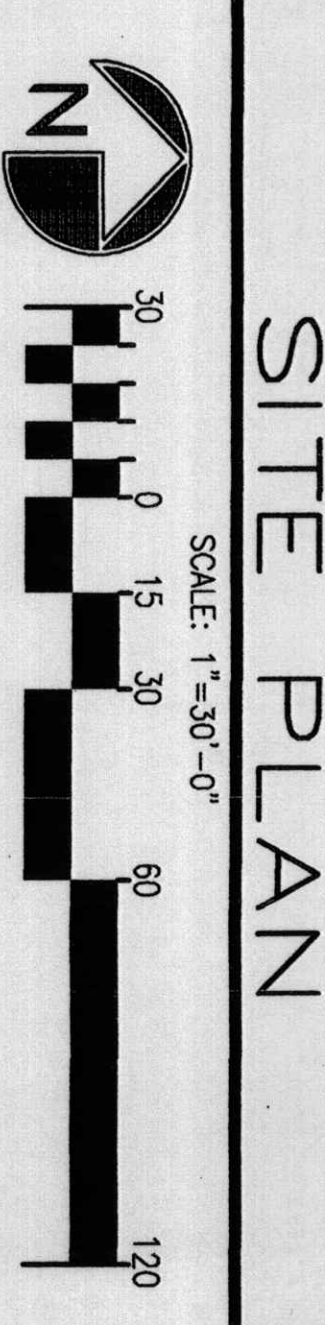
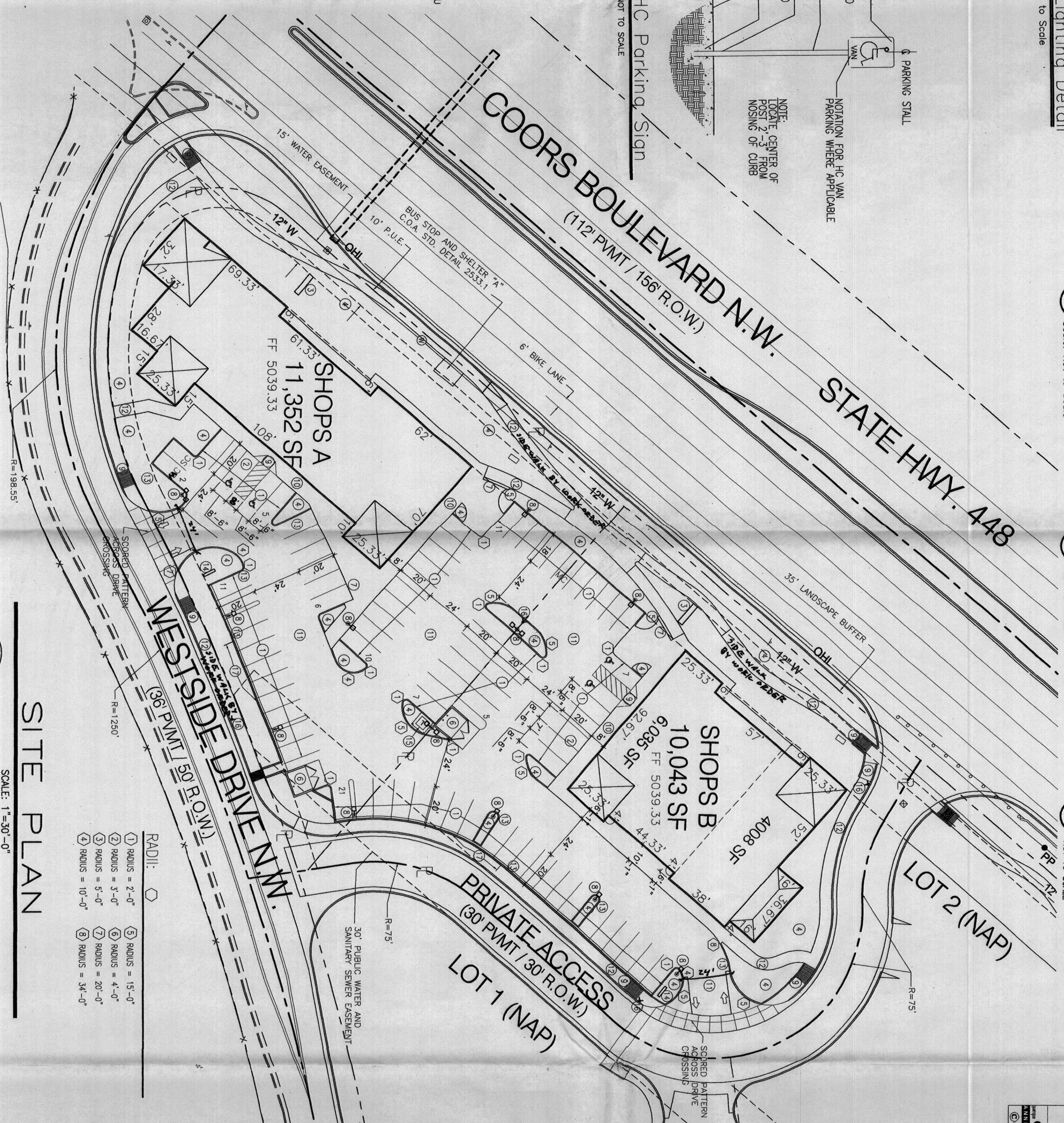
- OKED NOTES
- 8" CMU WALL WITH STUCCO SYSTEM OVER BUILDING PAPER, COLOR BY ARCHITECT.
 - FINISH GRADE.
 - SLOPE STUCCO CAP.
 - 4-#4 BARS CONT. @ BOTTOM OF FOOTING #4 @ 16" O.C. ACROSS BOTTOM OF FOOTING.
 - 2-#5 BARS @ TOP KNOCK-OUT BLOCK BOND BEAM.
 - CONTINUOUS: #5 BARS @ 32" O.C. VERTICAL, GROUT REINFORCED CELLS, JOINT WALL @ 16" O.C. HORIZONTAL.
 - ASPHALT PAVING GRADE, TYPICAL.
 - 1/2" EXPANSION JOINT MATERIAL.
 - 3/4" CONCRETE SLAB 3000 PSI 10x10 W.W.
 - 6" CONCRETE APRON 3000 PSI 10x10 W.W. W/ TURNDOWN EDGE.
 - 3/4" AGGREGATE WITH 6X6 - 16x16 W.W. TO MATCH STUCCO FINISH.
 - STEEL SLEEVE SET IN CONC. SPOT WELD @ TUBE.
 - CONC. FOOTING (SEE STRUCTURAL) CONC. WALK.
 - NOTE: LOCATE CENTER OF POST 2'-3" FROM NOSING OF CURB.
 - 2x2 STEEL TUBE.
 - 1/8" ALUM. PANE, SCREEN PAINT, SYMBOLS ON WHITE BACKGROUND.
 - PARKING STALL.
 - NOTATION FOR HC VAN PARKING WHERE APPLICABLE.

4 Refuse Enclosure
Scale: Not to Scale

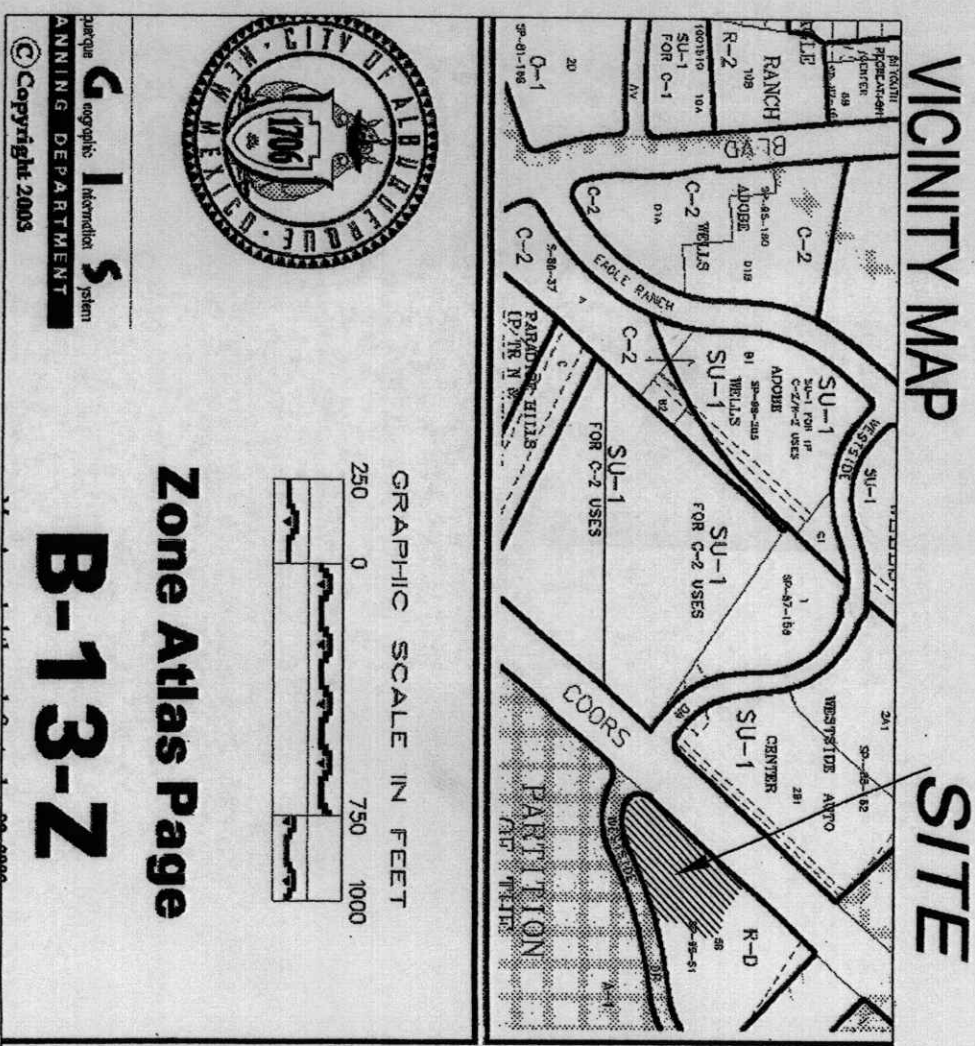
7 HC Parking Sign
NOT TO SCALE

1002529

PLANS CHECKING OFFICE
924-3611
APPROVED/DISAPPROVED
HYDRA(S) ONLY
7-1-05
SIGNATURE & DATE



SITE PLAN



VICINITY MAP

- LIST OF DRAWINGS:
- | NO. | DESCRIPTION |
|-------|------------------------------------|
| A1.0 | SITE PLAN FOR BUILDING PERMIT |
| G-1 | CONCEPTUAL LANDSCAPE PLAN |
| G-2 | CONCEPTUAL GRADING + DRAINAGE PLAN |
| A-2.1 | SHOPS A BUILDING ELEVATIONS |
| A-2.2 | SHOPS B BUILDING ELEVATIONS |

KEYNOTES:

- PARKING. (SEE PARKING NOTES BELOW)
- ACCESSIBLE PARKING VAN SPACE. (SEE DETAILS 5.6, 7)
- MONUMENT SIGN. SEE DETAIL 8.
- LANDSCAPE BUFFER.
- 15' H x 12' L WALL FOR SEATING WITH SHADE.
- COA APPROVED DUMPSTER ENCLOSURE. (SEE DETAIL 4)
- BIKE RACK. (SEE DETAIL 3)
- LIGHT POLE. (SEE DETAIL 1)
- ACCESSIBLE RAMP. (SEE DETAIL 1)
- 8" SIDEWALK AT AUTO PARKING.
- ASPHALTIC CONCRETE PAVING.
- NEW 6" CONCRETE SIDEWALK.
- CONCRETE STANDING CURB PER COA STD. DETAILS.
- DIRECTIONAL SIGN.
- TRANSFORMER.
- FIRE HYDRANT.
- MED. RAIN SPLIT FACE CMU RAINING WALL WITH VENTURIAN SIGHT LINE FROM 4 FT ABOVE COORS BLVD. TO SANDA CREST.

LEGAL DESCRIPTION

LOTS 3, 4 OF BLOCK FRANKS ESTATES TRACT 6-B, CURRENT ZONING: S-U-1 FOR CITY OF ALBUQUERQUE, 6-13-2 & 6-14-2.

SHOPS A PARCEL: 1.287 AC OR 56,044 SF
SHOPS B PARCEL: 0.565 AC OR 24,305 SF
TOTAL SUBDIVISION AC: 1.852 AC OR 80,349 SF
TOTAL SUBDIVISION AC: 5.57 AC

BUILDING AREA & PARKING CALCULATIONS:

SHOPS A
11,352 SF BUILDING
10,043 SF PARKING
TOTAL: 21,395 SF

SHOPS B
10,043 SF BUILDING
4,008 SF PARKING
TOTAL: 14,051 SF

PROJECT NUMBER: 1002529
APPLICATION NUMBER: 05026-01208

Is on infrastructure list required? () YES () NO If yes, then a set of approved site plans with a work order is required for any construction within public right-of-way or for construction of public improvements.

DBB SITE DEVELOPMENT PLAN SIGNOFF APPROVAL

Signature	Date
Michael H. Davis	8-3-05
Chadwick J. Davis	8-3-05
John J. Davis	8-3-05
John J. Davis	8-3-05

PROJECT TITLE: SHOPS at WESTSIDE DRIVE, NW
PROJECT MANAGER: George Rainhart, AIA
JOB NO.: 0615
DRAWN BY: BJ
SHEET TITLE: Site Plan for Building Permit

REV	DATE	BY	REVISION
1	06/07/05	BJ	EPC CONDITIONS

GEORGE RAINHART, ARCHITECT AND ASSOCIATES P.C.
2325 SAN PEDRO NE., SUITE 2-B
ALBUQUERQUE, NEW MEXICO 87110
PHONE (505) 884-9110 FAX (505) 837-9877

PROJECT TITLE	SHOPS at WESTSIDE DRIVE, NW
PROJECT MANAGER	George Rainhart, AIA
JOB NO.	0615
DRAWN BY	BJ
SHEET TITLE	Site Plan for Building Permit