

### TYPICAL WALL MOUNTED SITE LIGHT



**WEST MESA TWP**  
High Pressure Sodium  
35W, 50W, 70W, 100W, 150W  
6" to 25" Mounting

**FEATURES**  
Housing is rugged, corrosion-resistant, die-cast aluminum. Corrosion-resistant external hardware includes stored hex-head and tamper-proof fasteners. Finish is dark bronze thermal-polyester powder, electrostatically applied.  
BALLAST — High-resonance, high power factor. Encased-and-potted solid state ignitors. Ballast is copper wound and 100% factory tested. Meets ANSI standards and is UL listed. Electrical components are mounted on OPTICS — Reflector is finished in white thermoplastic powder, electrostatically applied. Front housing and reflector are one-piece injection-molded, UV-stabilized polycarbonate. Standard finish on opaque portion of front cover and back housing is dark bronze polyester enamel, UV-stabilized and baked to provide long life. Reflector is finished in white thermoplastic powder, electrostatically applied. Reflector is finished in white thermoplastic powder, electrostatically applied.  
INSTALLATION — Top 3/4" threaded wiring access. Back access through condenser top. Mount on any flat vertical surface.  
SOCKET — Purchased, horizontally-oriented, medium-base socket with gophers, nylon, multi-ported screw shell and center contact. UL listed 50W, 60W and 70W pole rated.  
LISTING — UL listed suitable for wet locations. Listed and labeled to comply with Canadian and Mexican Standards (see Options). IP69 rated in accordance with IEC Standard 528.  
NOTE: Not recommended for use in car wash interior applications.

CURVE DATA — DESCRIBES FACE OF CURB

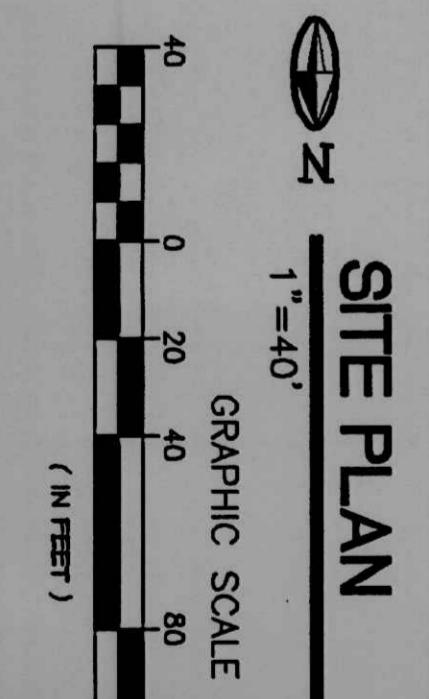
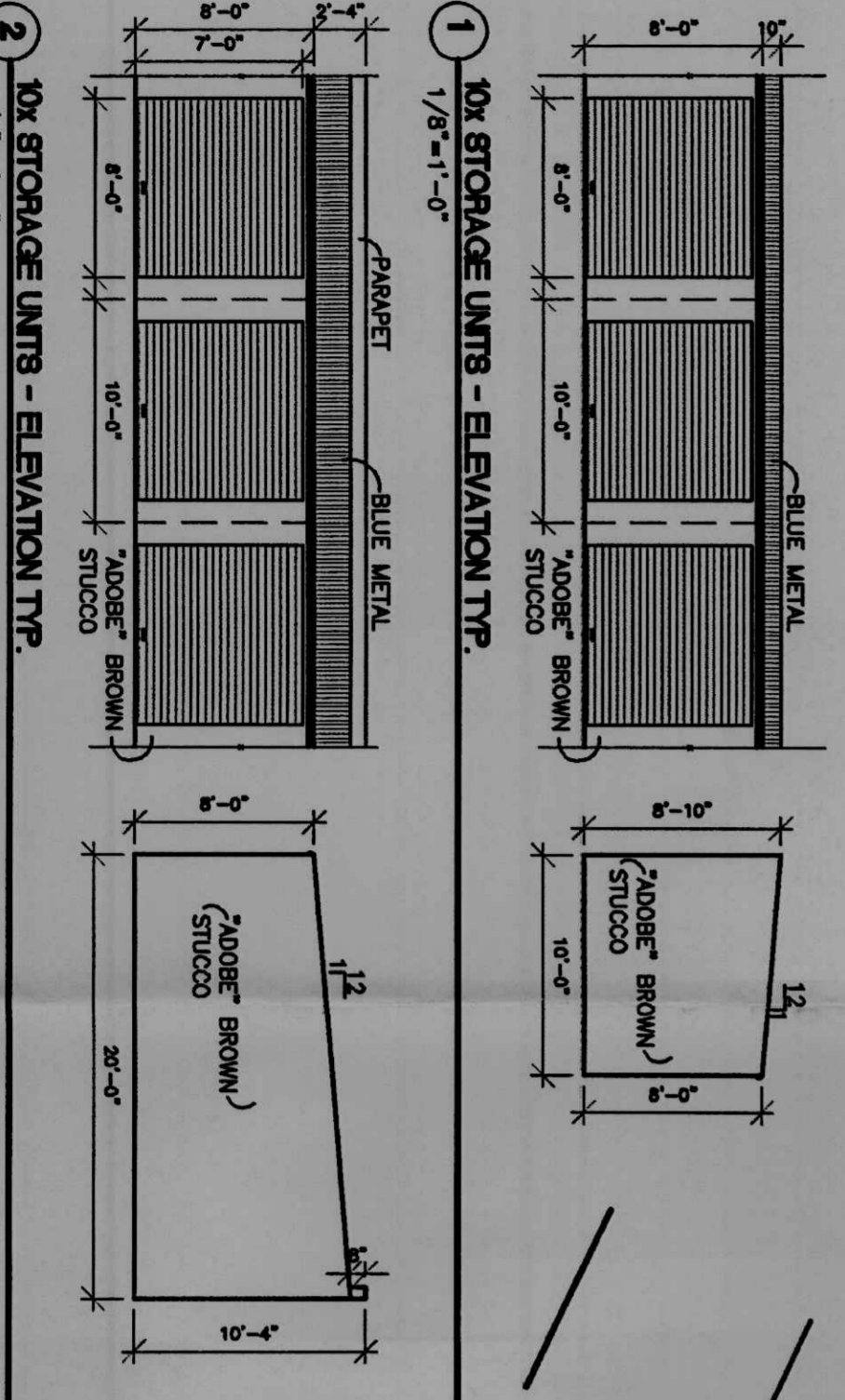
①	A = 91'40.40" RT.	②	A = 90'00.22" RT.
R = 23.00'	R = 23.00'	L = 40.00'	L = 39.27'
L = 40.00'	L = 25.74'	T = 25.74'	T = 25.00'
T = 25.74'			
③	A = 21'47.06" RT.	④	A = 27'39.13" RT.
R = 25.00'	R = 40.00'	L = 184.76'	L = 7.85'
L = 9.51'	L = 43.92'	T = 7.85'	T = 5.00'
T = 4.81'	T = -43.92'		
⑤	A = 62'52.07" RT.	⑥	A = 90'00.00" RT.
R = 25.00'	R = 5.00'	L = 27.43'	L = 7.85'
L = 27.43'	L = 7.85'	T = 15.28'	T = 5.00'
T = 15.28'			

EXISTING MANHOLE WITH INLET TOP  
EXISTING MANHOLE WITH INLET TOP  
EXISTING MANHOLE WITH INLET TOP

### SITE PLAN

# 1000610

**ADMINISTRATIVE AMENDMENT**  
File # CAD-2022 Project # 1000610  
Address: 4161 N. 2nd St. NW  
City: Albuquerque, NM 87102  
APPROVED BY: *[Signature]*  
DATE: 4-17-24



**BUILDING AREA**

EXISTING BUILDING A	= 15,579 S.F.
EXISTING BUILDING B	= 5,028 S.F.
EXISTING BUILDING C	= 2,235 S.F.
EXISTING BUILDING D	= 3,000 S.F.
EXISTING BUILDING E	= 2,998 S.F.
EXISTING BUILDING F	= 11,507 S.F.
EXISTING BUILDING G	= 4,498 S.F.
EXISTING BUILDING H	= 3,904 S.F.
EXISTING BUILDING I	= 5,388 S.F.
NEW BUILDING J	= 4,936 S.F.
NEW BUILDING K	= 3,022 S.F.
NEW BUILDING L	= 4,000 S.F.
NEW RV PARKING M	= 15,000 S.F.
NEW RV PARKING N	= 19,500 S.F.
NEW RV PARKING P	= 11,520 S.F.
TRACT 333-A-1-C-1	= 122,212 S.F. (2.80 AC)
TRACT 334	= 133,894 S.F. (3.07 AC)
TOTAL ACREAGE	= 256,106 S.F. (5.87 AC)

**LEGAL DESCRIPTION:**  
TRACT 333-A-1-C-1  
TRACT 334  
TOTAL ACREAGE = 256,106 S.F. (5.87 AC)

**REVISION DATE**

DATE	06-09-03
SHEET NUMBER	C-1

**WEST MESA ARCHITECTS**  
1104 Park Avenue SW • Albuquerque, New Mexico 87102  
(505) 242-1819 • Fax (505) 242-6630 • westmesa@westmesa.com

**TYPICAL WALL MOUNTED SITE LIGHT**

**FEATURES**

**HOUSING** — Rear housing is rugged, corrosion-resistant, die-cast aluminum. Corrosion-resistant external hardware includes slotted hex-head stainless steel fasteners. Finish is dark bronze thermoset polyester powder, electrostatically applied.

**BALAST** — High-voltage, high power factor. Encased-and-parted solid-state ballast is copper wound and 100% factory tested. Meets ANSI standards and is UL listed. Electrical components are mounted on back housing. For 30 hertz availability, consult factory.

**OPTICS** — Reflector is finished in white thermoset polyester powder, electrostatically applied. Front housing and reflector are one-piece, injection-molded, UV-stabilized polycarbonate. Standard finish on opaque portion of front cover and back housing is dark bronze polyester enamel. Reflector is sealed and gasketed to inhibit the entrance of outside contaminants.

**INSTALLATION** — Top 3/4" threaded wiring access. Back access through removable 2 1/2" knockout. Feed-thru wiring can be achieved by using a conduit tee. Mount on any flat vertical surface.

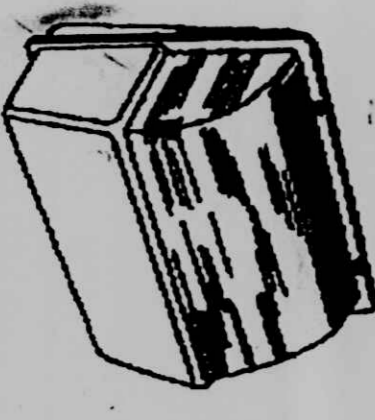
**SOCKET** — Porcelain, horizontally-oriented, medium-base socket with copper alloy, nickel-plated screw shell and center contact. UL listed 600W, 600V and 4KV pulse rated.

**LISTING** — UL listed suitable for wet locations. Listed and labeled to comply with Canadian and Mexican Standards (see Options). IP64 rated in accordance with IEC Standard 529.

**NOTE: Not recommended for use in car wash interior applications.**

**Watt-Packs**  
**TWP**

**HIGH PRESSURE SODIUM**  
35W, 50W, 70W, 100W, 150W  
8" to 25" Mounting

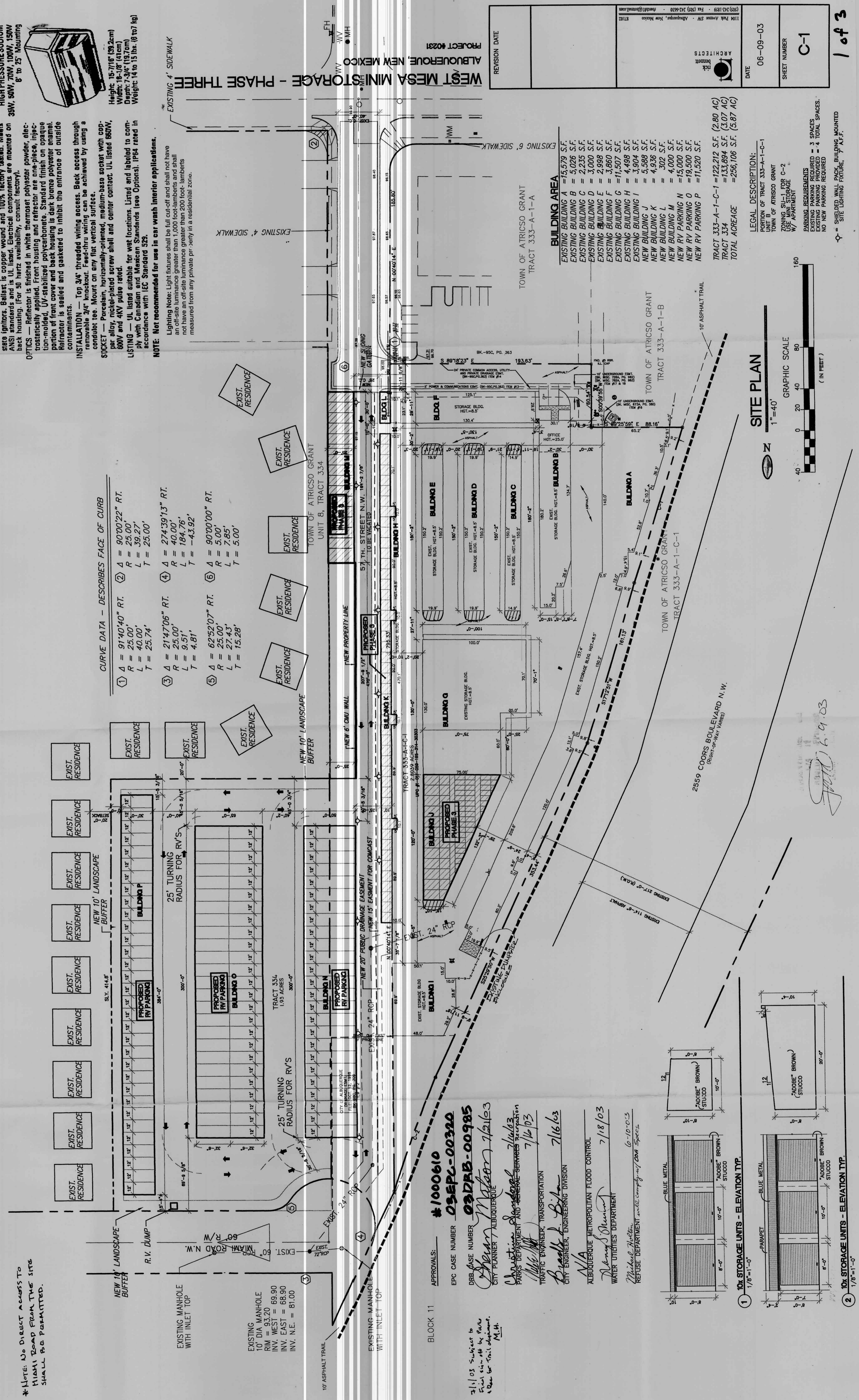


Height: 15-7/16" (39.2cm)  
Width: 16-1/8" (41cm)  
Depth: 7-3/4" (19.7cm)  
Weight: 14 to 15 lbs. (6 to 7 kg)

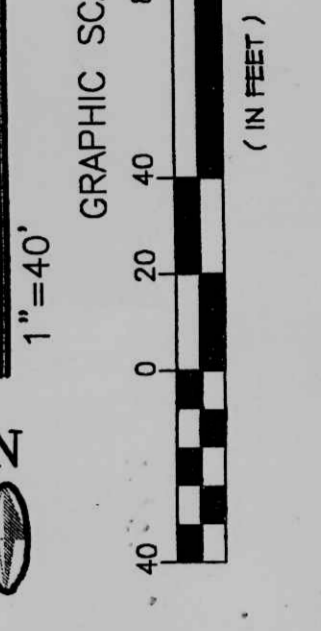
**EXISTING 4" SIDEWALK**  
Lighting Note: Light fixtures shall be full cut-off and shall not have an off-site luminance greater than 200 foot-candles and shall not have a beam spread greater than 200 foot-lamberts measured from any private property in a residential zone.

**CURVE DATA - DESCRIBES FACE OF CURB**

①	Δ = 91'40.40" RT.	②	Δ = 90'00.22" RT.
	R = 25.00'		R = 25.00'
	L = 39.27'		L = 39.27'
	T = 25.74'		T = 25.00'
③	Δ = 21'47.06" RT.	④	Δ = 274'39.13" RT.
	R = 25.00'		R = 40.00'
	L = 9.91'		L = 184.76'
	T = 4.81'		T = -43.92'
⑤	Δ = 62'52.07" RT.	⑥	Δ = 90'00.00" RT.
	R = 25.00'		R = 5.00'
	L = 27.43'		L = 2.65'
	T = 15.28'		T = 5.00'



**SITE PLAN**



REVISION DATE	PROJECT #0231
DATE	06-09-03
SHEET NUMBER	C-1

**BUILDING AREA**

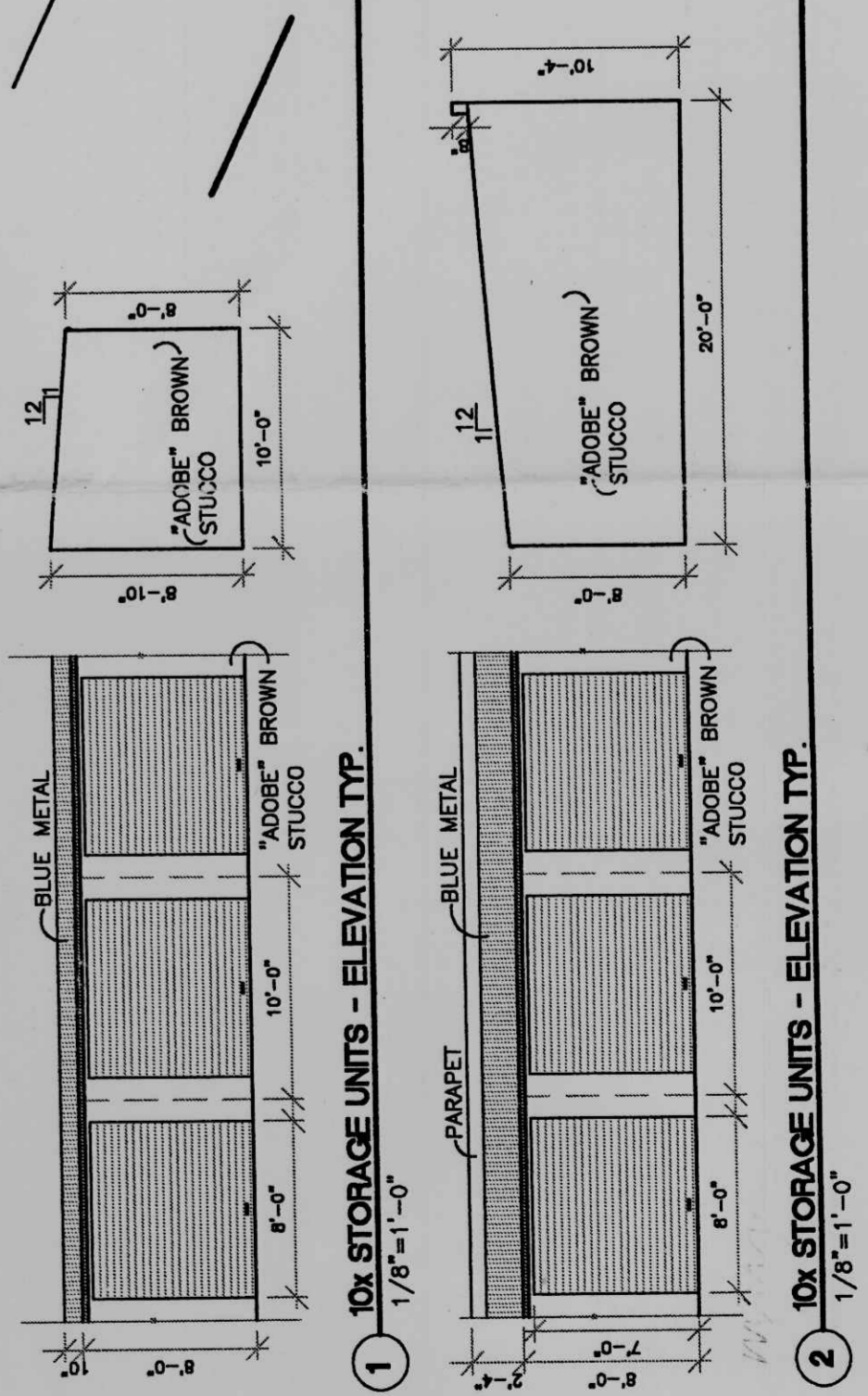
EXISTING BUILDING A	= 15,579 S.F.
EXISTING BUILDING B	= 5,026 S.F.
EXISTING BUILDING C	= 2,235 S.F.
EXISTING BUILDING D	= 3,000 S.F.
EXISTING BUILDING E	= 2,998 S.F.
EXISTING BUILDING F	= 3,660 S.F.
EXISTING BUILDING G	= 11,507 S.F.
EXISTING BUILDING H	= 4,498 S.F.
EXISTING BUILDING I	= 3,904 S.F.
EXISTING BUILDING J	= 5,568 S.F.
NEW BUILDING K	= 302 S.F.
NEW BUILDING L	= 4,000 S.F.
NEW RV PARKING O	= 19,500 S.F.
NEW RV PARKING P	= 11,520 S.F.
<b>TRACT 333-A-1-C-1</b>	<b>= 122,212 S.F. (2.80 AC)</b>
<b>TRACT 334</b>	<b>= 133,894 S.F. (3.07 AC)</b>
<b>TOTAL ACREAGE</b>	<b>= 256,106 S.F. (5.87 AC)</b>

**LEGAL DESCRIPTION:**  
PORTION OF TRACT 333-A-1-C-1  
TOWN OF ATRISCO GRANT  
ZONING SUBDIVISION C-2  
WY APARTMENT

**PARKING REQUIREMENTS** = 3 SPACES  
**EXISTING PARKING PROVIDED** = 4 TOTAL SPACES.  
**NO NEW PARKING REQUIRED**

☞ = SHIELDED WALL PACK BUILDING MOUNTED SITE LIGHTING FIXTURE, 7 A.F.P.

APPROVALS: #1000610  
EPC CASE NUMBER 05EPL-00390  
DRB CASE NUMBER 03DAB-00985  
CITY PLANNER *Sharon Wilson* 7/16/03  
CITY ENGINEER *Christina Anderson* 7/16/03  
TRAFFIC ENGINEER *Michael A. Bilton* 7/16/03  
CITY ENGINEER, ENGINEERING DIVISION  
ALBUQUERQUE METROPOLITAN FLOOD CONTROL  
WATER UTILITIES DEPARTMENT  
7/18/03  
Michael A. Bilton  
REFUSE DEPARTMENT *will comply with specs.* 6-10-03



\*NOTE: NO DIRECT ACCESS TO HIGHWAY FROM THE SITE SHALL BE PERMITTED.