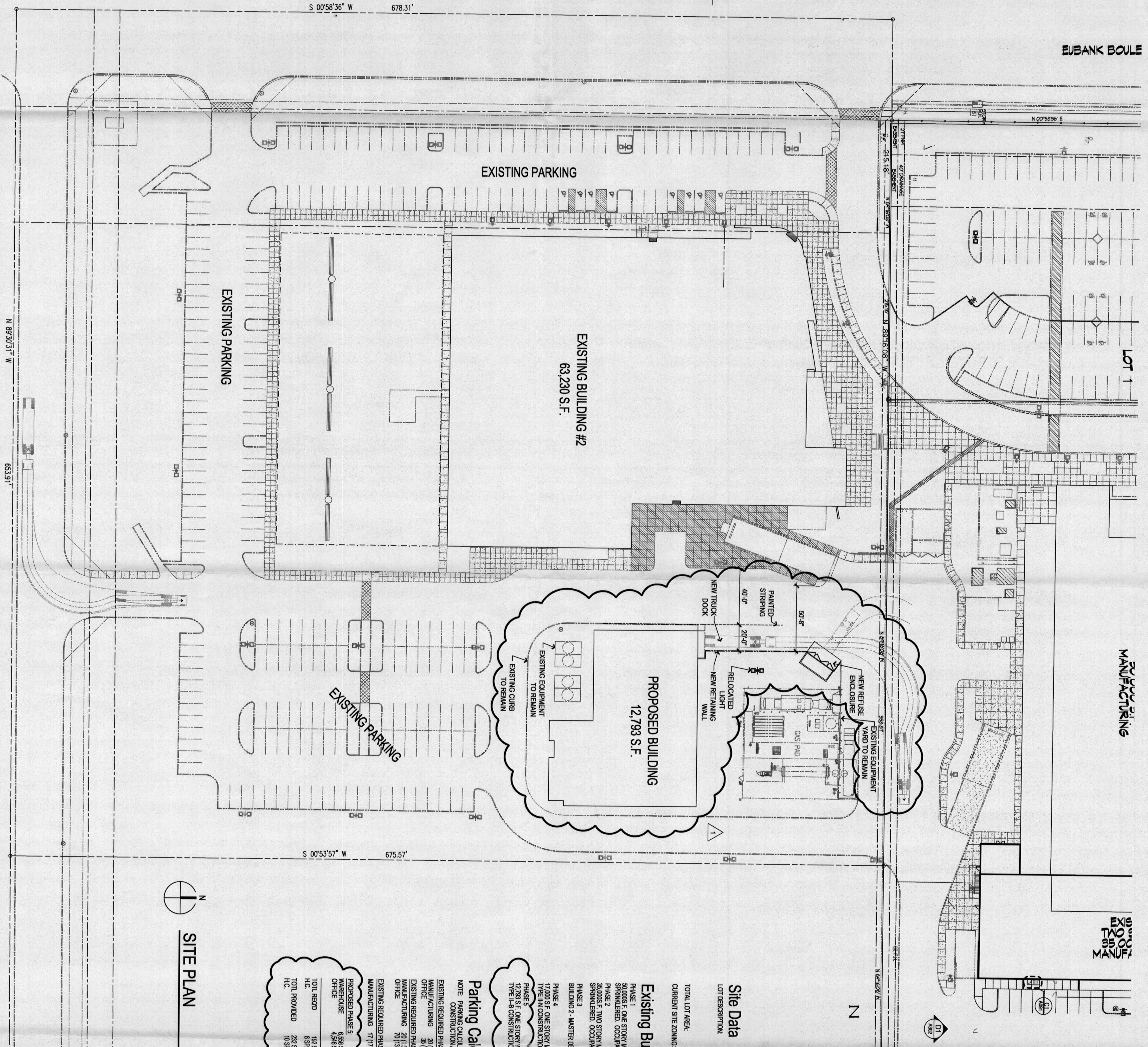
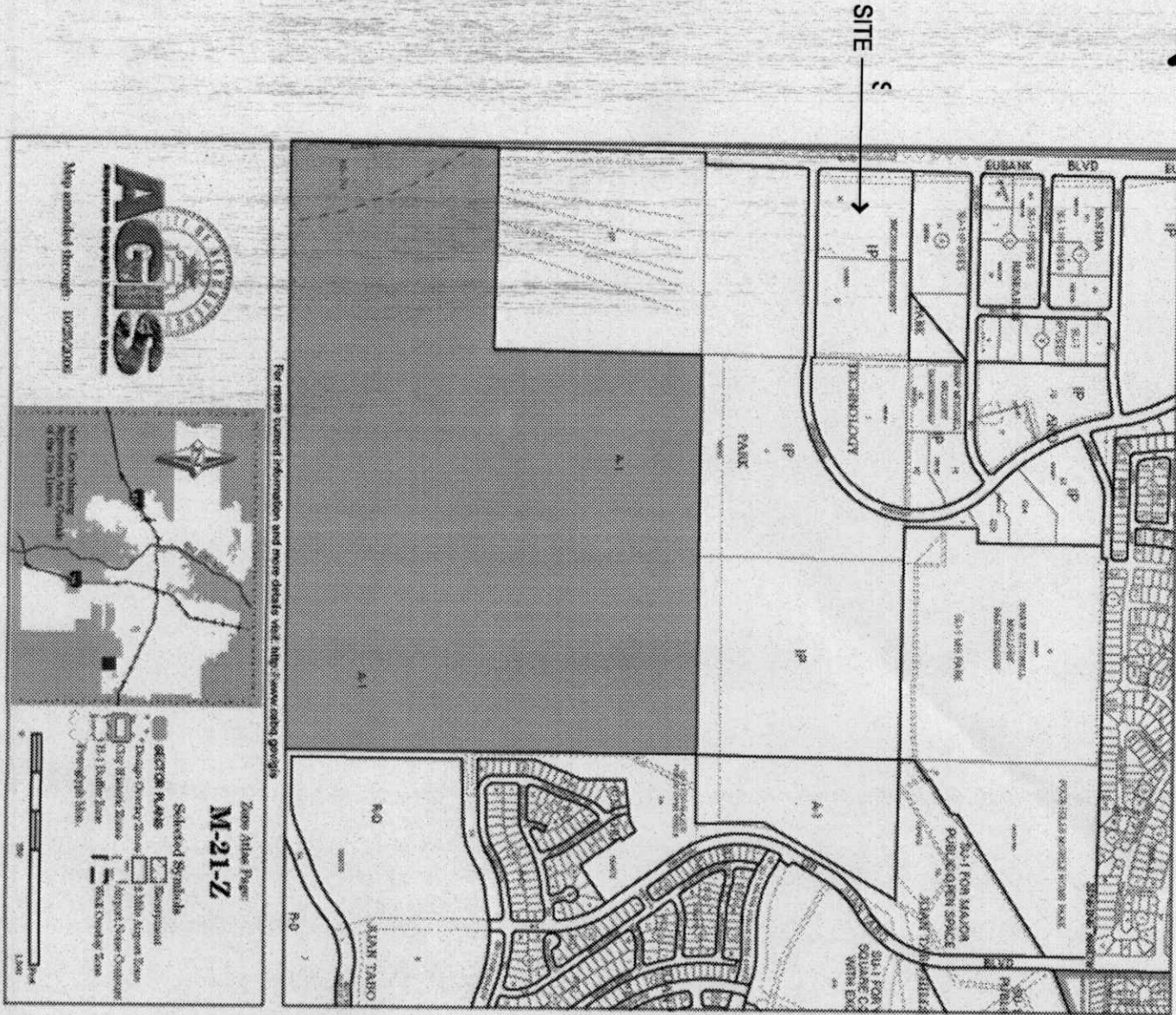


1000554
9/21/08
M-21-Z



Request For Administrative Amendment #8

Admin. Amend #1 (4/4/85)	dated 5/14/85 approved 5/21/85
Admin. Amend #2 (4/4/85)	dated 5/14/85 approved 5/21/85
Admin. Amend #3 (4/4/85)	dated 5/14/85 approved 5/21/85
Admin. Amend #4 (4/4/85)	dated 5/14/85 approved 5/21/85
Admin. Amend #5 (4/4/85)	dated 5/14/85 approved 5/21/85
Admin. Amend #6 (4/4/85)	dated 5/14/85 approved 5/21/85
Admin. Amend #7 (4/4/85)	dated 5/14/85 approved 5/21/85
Admin. Amend #8 (4/4/85)	dated 5/14/85 approved 5/21/85
Admin. Amend #9 (4/4/85)	dated 5/14/85 approved 5/21/85
Admin. Amend #10 (4/4/85)	dated 5/14/85 approved 5/21/85
Admin. Amend #11 (4/4/85)	dated 5/14/85 approved 5/21/85
Admin. Amend #12 (4/4/85)	dated 5/14/85 approved 5/21/85
Admin. Amend #13 (4/4/85)	dated 5/14/85 approved 5/21/85
Admin. Amend #14 (4/4/85)	dated 5/14/85 approved 5/21/85
Admin. Amend #15 (4/4/85)	dated 5/14/85 approved 5/21/85
Admin. Amend #16 (4/4/85)	dated 5/14/85 approved 5/21/85
Admin. Amend #17 (4/4/85)	dated 5/14/85 approved 5/21/85
Admin. Amend #18 (4/4/85)	dated 5/14/85 approved 5/21/85
Admin. Amend #19 (4/4/85)	dated 5/14/85 approved 5/21/85
Admin. Amend #20 (4/4/85)	dated 5/14/85 approved 5/21/85
Admin. Amend #21 (4/4/85)	dated 5/14/85 approved 5/21/85
Admin. Amend #22 (4/4/85)	dated 5/14/85 approved 5/21/85
Admin. Amend #23 (4/4/85)	dated 5/14/85 approved 5/21/85
Admin. Amend #24 (4/4/85)	dated 5/14/85 approved 5/21/85
Admin. Amend #25 (4/4/85)	dated 5/14/85 approved 5/21/85
Admin. Amend #26 (4/4/85)	dated 5/14/85 approved 5/21/85
Admin. Amend #27 (4/4/85)	dated 5/14/85 approved 5/21/85
Admin. Amend #28 (4/4/85)	dated 5/14/85 approved 5/21/85
Admin. Amend #29 (4/4/85)	dated 5/14/85 approved 5/21/85
Admin. Amend #30 (4/4/85)	dated 5/14/85 approved 5/21/85
Admin. Amend #31 (4/4/85)	dated 5/14/85 approved 5/21/85
Admin. Amend #32 (4/4/85)	dated 5/14/85 approved 5/21/85
Admin. Amend #33 (4/4/85)	dated 5/14/85 approved 5/21/85
Admin. Amend #34 (4/4/85)	dated 5/14/85 approved 5/21/85
Admin. Amend #35 (4/4/85)	dated 5/14/85 approved 5/21/85
Admin. Amend #36 (4/4/85)	dated 5/14/85 approved 5/21/85
Admin. Amend #37 (4/4/85)	dated 5/14/85 approved 5/21/85
Admin. Amend #38 (4/4/85)	dated 5/14/85 approved 5/21/85
Admin. Amend #39 (4/4/85)	dated 5/14/85 approved 5/21/85
Admin. Amend #40 (4/4/85)	dated 5/14/85 approved 5/21/85
Admin. Amend #41 (4/4/85)	dated 5/14/85 approved 5/21/85
Admin. Amend #42 (4/4/85)	dated 5/14/85 approved 5/21/85
Admin. Amend #43 (4/4/85)	dated 5/14/85 approved 5/21/85
Admin. Amend #44 (4/4/85)	dated 5/14/85 approved 5/21/85
Admin. Amend #45 (4/4/85)	dated 5/14/85 approved 5/21/85
Admin. Amend #46 (4/4/85)	dated 5/14/85 approved 5/21/85
Admin. Amend #47 (4/4/85)	dated 5/14/85 approved 5/21/85
Admin. Amend #48 (4/4/85)	dated 5/14/85 approved 5/21/85
Admin. Amend #49 (4/4/85)	dated 5/14/85 approved 5/21/85
Admin. Amend #50 (4/4/85)	dated 5/14/85 approved 5/21/85
Admin. Amend #51 (4/4/85)	dated 5/14/85 approved 5/21/85
Admin. Amend #52 (4/4/85)	dated 5/14/85 approved 5/21/85
Admin. Amend #53 (4/4/85)	dated 5/14/85 approved 5/21/85
Admin. Amend #54 (4/4/85)	dated 5/14/85 approved 5/21/85
Admin. Amend #55 (4/4/85)	dated 5/14/85 approved 5/21/85
Admin. Amend #56 (4/4/85)	dated 5/14/85 approved 5/21/85
Admin. Amend #57 (4/4/85)	dated 5/14/85 approved 5/21/85
Admin. Amend #58 (4/4/85)	dated 5/14/85 approved 5/21/85
Admin. Amend #59 (4/4/85)	dated 5/14/85 approved 5/21/85
Admin. Amend #60 (4/4/85)	dated 5/14/85 approved 5/21/85
Admin. Amend #61 (4/4/85)	dated 5/14/85 approved 5/21/85
Admin. Amend #62 (4/4/85)	dated 5/14/85 approved 5/21/85
Admin. Amend #63 (4/4/85)	dated 5/14/85 approved 5/21/85
Admin. Amend #64 (4/4/85)	dated 5/14/85 approved 5/21/85
Admin. Amend #65 (4/4/85)	dated 5/14/85 approved 5/21/85
Admin. Amend #66 (4/4/85)	dated 5/14/85 approved 5/21/85
Admin. Amend #67 (4/4/85)	dated 5/14/85 approved 5/21/85
Admin. Amend #68 (4/4/85)	dated 5/14/85 approved 5/21/85
Admin. Amend #69 (4/4/85)	dated 5/14/85 approved 5/21/85
Admin. Amend #70 (4/4/85)	dated 5/14/85 approved 5/21/85
Admin. Amend #71 (4/4/85)	dated 5/14/85 approved 5/21/85
Admin. Amend #72 (4/4/85)	dated 5/14/85 approved 5/21/85
Admin. Amend #73 (4/4/85)	dated 5/14/85 approved 5/21/85
Admin. Amend #74 (4/4/85)	dated 5/14/85 approved 5/21/85
Admin. Amend #75 (4/4/85)	dated 5/14/85 approved 5/21/85
Admin. Amend #76 (4/4/85)	dated 5/14/85 approved 5/21/85
Admin. Amend #77 (4/4/85)	dated 5/14/85 approved 5/21/85
Admin. Amend #78 (4/4/85)	dated 5/14/85 approved 5/21/85
Admin. Amend #79 (4/4/85)	dated 5/14/85 approved 5/21/85
Admin. Amend #80 (4/4/85)	dated 5/14/85 approved 5/21/85
Admin. Amend #81 (4/4/85)	dated 5/14/85 approved 5/21/85
Admin. Amend #82 (4/4/85)	dated 5/14/85 approved 5/21/85
Admin. Amend #83 (4/4/85)	dated 5/14/85 approved 5/21/85
Admin. Amend #84 (4/4/85)	dated 5/14/85 approved 5/21/85
Admin. Amend #85 (4/4/85)	dated 5/14/85 approved 5/21/85
Admin. Amend #86 (4/4/85)	dated 5/14/85 approved 5/21/85
Admin. Amend #87 (4/4/85)	dated 5/14/85 approved 5/21/85
Admin. Amend #88 (4/4/85)	dated 5/14/85 approved 5/21/85
Admin. Amend #89 (4/4/85)	dated 5/14/85 approved 5/21/85
Admin. Amend #90 (4/4/85)	dated 5/14/85 approved 5/21/85
Admin. Amend #91 (4/4/85)	dated 5/14/85 approved 5/21/85
Admin. Amend #92 (4/4/85)	dated 5/14/85 approved 5/21/85
Admin. Amend #93 (4/4/85)	dated 5/14/85 approved 5/21/85
Admin. Amend #94 (4/4/85)	dated 5/14/85 approved 5/21/85
Admin. Amend #95 (4/4/85)	dated 5/14/85 approved 5/21/85
Admin. Amend #96 (4/4/85)	dated 5/14/85 approved 5/21/85
Admin. Amend #97 (4/4/85)	dated 5/14/85 approved 5/21/85
Admin. Amend #98 (4/4/85)	dated 5/14/85 approved 5/21/85
Admin. Amend #99 (4/4/85)	dated 5/14/85 approved 5/21/85
Admin. Amend #100 (4/4/85)	dated 5/14/85 approved 5/21/85

Request For Administrative Amendment #8

Requested revisions to Site Plan Addition of 12,793 sq. Warehouse/Office Building on previous APPROVED PUD SITE.

DATE: 11/13/08
 APPROVED BY: [Signature]

Site Data

TRACT A OF LAND IN SECTION 38T 19N R 4 E IN THE NORTH 1/2 OF THE SW 1/4 OF THE NW 1/4

TOTAL LOT AREA: 16,154 ACRES OR 442,338.97 SQUARE FEET

CURRENT SITE ZONING: P- INDUSTRIAL PARK

Existing Building Data

PHASE 1: 30,000 S.F. ONE STORY MANUFACTURING WITH SUPPORTING OFFICES. TYPE I-A CONSTRUCTION. SPRINKLERED. OCCUPANCY TYPE I-A.

PHASE 2: 12,793 S.F. ONE STORY WAREHOUSE WITH SUPPORTING OFFICES. TYPE I-A CONSTRUCTION. SPRINKLERED. OCCUPANCY TYPE I-A.

PHASE 3: 12,793 S.F. ONE STORY WAREHOUSE WITH SUPPORTING OFFICES. TYPE I-A CONSTRUCTION. SPRINKLERED. OCCUPANCY TYPE I-A.

PHASE 4: 12,793 S.F. ONE STORY WAREHOUSE WITH SUPPORTING OFFICES. TYPE I-A CONSTRUCTION. SPRINKLERED. OCCUPANCY TYPE I-A.

Proposed Building

12,793 S.F.

Site Plan

1"=40'-0"

Site Data

TRACT A OF LAND IN SECTION 38T 19N R 4 E IN THE NORTH 1/2 OF THE SW 1/4 OF THE NW 1/4

TOTAL LOT AREA: 16,154 ACRES OR 442,338.97 SQUARE FEET

CURRENT SITE ZONING: P- INDUSTRIAL PARK

Existing Building Data

PHASE 1: 30,000 S.F. ONE STORY MANUFACTURING WITH SUPPORTING OFFICES. TYPE I-A CONSTRUCTION. SPRINKLERED. OCCUPANCY TYPE I-A.

PHASE 2: 12,793 S.F. ONE STORY WAREHOUSE WITH SUPPORTING OFFICES. TYPE I-A CONSTRUCTION. SPRINKLERED. OCCUPANCY TYPE I-A.

PHASE 3: 12,793 S.F. ONE STORY WAREHOUSE WITH SUPPORTING OFFICES. TYPE I-A CONSTRUCTION. SPRINKLERED. OCCUPANCY TYPE I-A.

PHASE 4: 12,793 S.F. ONE STORY WAREHOUSE WITH SUPPORTING OFFICES. TYPE I-A CONSTRUCTION. SPRINKLERED. OCCUPANCY TYPE I-A.

Proposed Building

12,793 S.F.

Site Plan

1"=40'-0"

Site Data

TRACT A OF LAND IN SECTION 38T 19N R 4 E IN THE NORTH 1/2 OF THE SW 1/4 OF THE NW 1/4

TOTAL LOT AREA: 16,154 ACRES OR 442,338.97 SQUARE FEET

CURRENT SITE ZONING: P- INDUSTRIAL PARK

Existing Building Data

PHASE 1: 30,000 S.F. ONE STORY MANUFACTURING WITH SUPPORTING OFFICES. TYPE I-A CONSTRUCTION. SPRINKLERED. OCCUPANCY TYPE I-A.

PHASE 2: 12,793 S.F. ONE STORY WAREHOUSE WITH SUPPORTING OFFICES. TYPE I-A CONSTRUCTION. SPRINKLERED. OCCUPANCY TYPE I-A.

PHASE 3: 12,793 S.F. ONE STORY WAREHOUSE WITH SUPPORTING OFFICES. TYPE I-A CONSTRUCTION. SPRINKLERED. OCCUPANCY TYPE I-A.

PHASE 4: 12,793 S.F. ONE STORY WAREHOUSE WITH SUPPORTING OFFICES. TYPE I-A CONSTRUCTION. SPRINKLERED. OCCUPANCY TYPE I-A.

Proposed Building

12,793 S.F.

Site Plan

1"=40'-0"

Site Data

TRACT A OF LAND IN SECTION 38T 19N R 4 E IN THE NORTH 1/2 OF THE SW 1/4 OF THE NW 1/4

TOTAL LOT AREA: 16,154 ACRES OR 442,338.97 SQUARE FEET

CURRENT SITE ZONING: P- INDUSTRIAL PARK

Existing Building Data

PHASE 1: 30,000 S.F. ONE STORY MANUFACTURING WITH SUPPORTING OFFICES. TYPE I-A CONSTRUCTION. SPRINKLERED. OCCUPANCY TYPE I-A.

PHASE 2: 12,793 S.F. ONE STORY WAREHOUSE WITH SUPPORTING OFFICES. TYPE I-A CONSTRUCTION. SPRINKLERED. OCCUPANCY TYPE I-A.

PHASE 3: 12,793 S.F. ONE STORY WAREHOUSE WITH SUPPORTING OFFICES. TYPE I-A CONSTRUCTION. SPRINKLERED. OCCUPANCY TYPE I-A.

PHASE 4: 12,793 S.F. ONE STORY WAREHOUSE WITH SUPPORTING OFFICES. TYPE I-A CONSTRUCTION. SPRINKLERED. OCCUPANCY TYPE I-A.

Proposed Building

12,793 S.F.

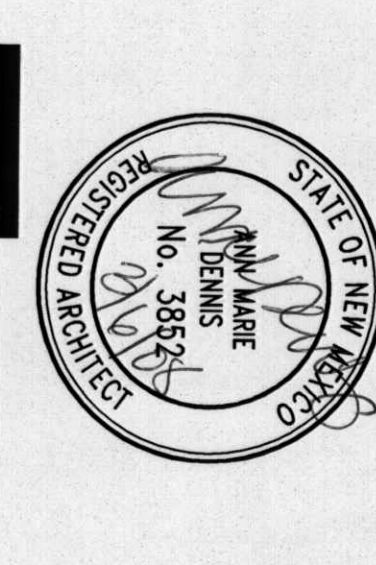
Site Plan

1"=40'-0"



Dekker Perich Sabatini
 Architects

7601 Jefferson NE Suite 100
 Albuquerque, NM 87109
 505 761-9700
 fax: 761-4222
 dps@dpsdesign.com



ADMINISTRATIVE AMENDMENT

Office/Warehouse Addition

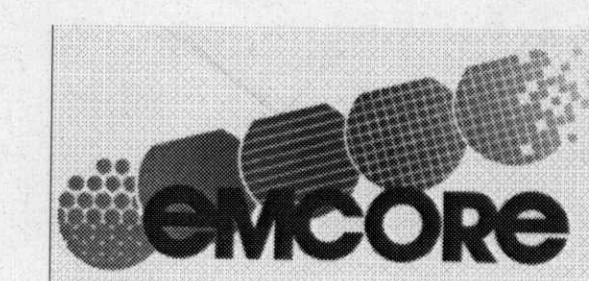
1600 Eubank Blvd. SE
 Albuquerque, New Mexico 87123

REVISIONS

1	
2	
3	
4	

DRAWN BY	amd
REVIEWED BY	
DATE	FEBRUARY 15, 2008
PROJECT NO.	08-0006-001
DRAWING NAME	SITE PLAN

SHEET NO. **A001** OF



ADMINISTRATIVE AMENDMENT

Project # 14000554

12,793 S.F. Office Warehouse Building

[Signature]

DATE 2/14/08

DO NOT DIMENSION STEEL LIGHTING IN DOUBLE OR CUT OFF FORWARD THROUGH 2000 PERS. FUTURE BEING DETAIL THIS SHEET

DO NOT DIMENSION STEEL LIGHTING IN SINGLE OR CUT OFF FORWARD THROUGH 2000 PERS. FUTURE BEING DETAIL THIS SHEET

F.H. PRIVATE FIRE HYDRANT (U.M.O.)

BICYCLE PARKING

Eubank Boulevard, S.E.
(108' R.O.W.)

B L O C K 4

N 00°58'36" E

678.72'

1228.27'

S 00°58'36" W 678.72'
EXISTING 50' PAV. EASEMENT
REC. 8/24/82, BK. C20, PG. 24

EXISTING 45' DRAINAGE EASEMENT
REC. 8/24/82, BK. C20, PG. 24

S 89°16'08" E

LOT 1
SANDRA RESEARCH PARK
REC. 9/9/84, VOL. C24, PG. 115
TEMPORARY PUBLIC
DRAINAGE EASEMENT

STATE OF NEW MEXICO
SUMMARY PLAT FOR ANNEXATION
FILED AUGUST 24, 1992
VOL. C20, FOLIO 24
AREA = 19,0739 ac±

DIRT ROAD

DIRT ROAD

N 89°30'31" W

673.57'

S 00°49'51" W

Legend

(N 90°00'00" E)	RECORD BEGINNINGS AND DISTANCES
(N 90°00'00" E)	SHOWING IN PARALLELS
(N 90°00'00" E)	RECORDED BEGINNINGS AND DISTANCES
(N 90°00'00" E)	PAVED AND USED MONUMENT
(N 90°00'00" E)	PAVED AND USED MONUMENT
(N 90°00'00" E)	UTILITY POLE
(N 90°00'00" E)	WATER METER
(N 90°00'00" E)	OAK METER
(N 90°00'00" E)	ELECTRIC METER
(N 90°00'00" E)	OVERHEAD UTILITY LINES

ALBUQUERQUE PUBLIC SCHOOLS
BOARD OF EDUCATION
SUMMARY PLAT FOR ANNEXATION
FILED AUGUST 24, 1992
VOL. C20, FOLIO 24

